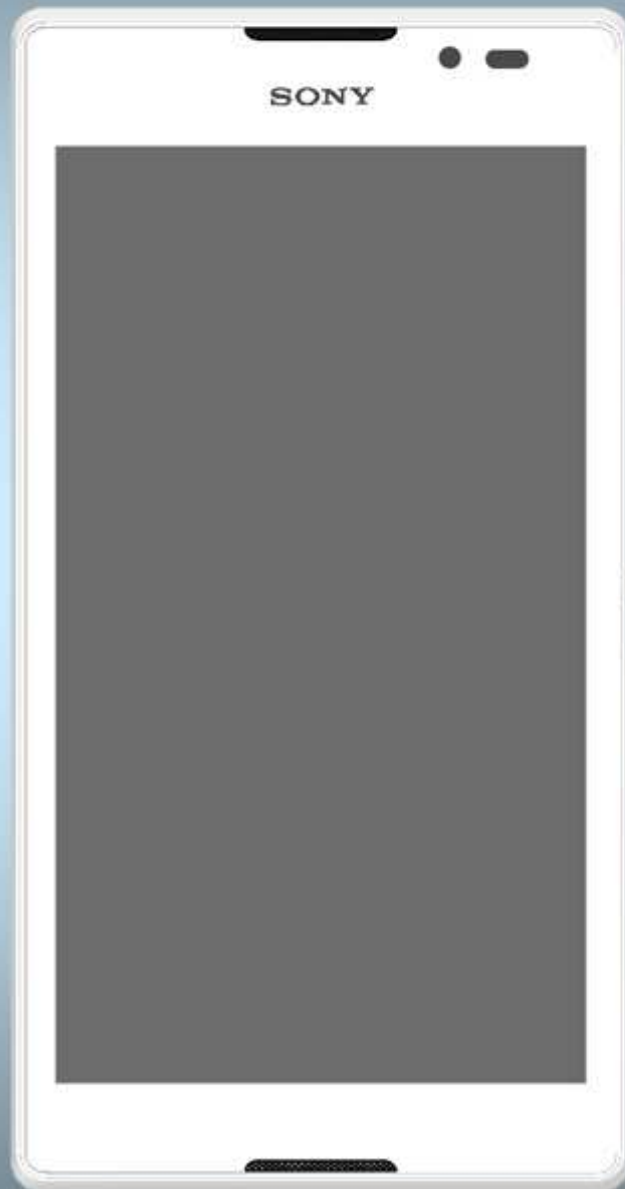


Working Instructions

- mechanical -



C2304, C2305, S39h

CONTENTS

1	Exterior Views.....	4
1.1	C2305, S39h	4
2	Tools	5
3	Disassembly	6
3.1	Battery Cover Assy	6
3.2	Rear Cover Assy.....	7
3.3	Main PBA (a) & Coaxial Cable (b)	13
3.4	Front Cover LCM TP Assy	15
4	Replacement	16
4.1	Battery Cover Assy	16
4.2	Rear Cover Assy.....	16
4.3	Screw TORX 1.6mm 2.8mm Black	16
4.4	Screw TORX 1.6mm 4.5mm Black	16
4.5	Front Cover LCM TP Assy	17
4.6	LCM ZIF MYLAR	17
4.7	TP FPC MYLAR.....	17
4.8	Battery 2330.0 mA & Embedded Battery Adhesive	18
4.9	Battery FPC Mylar	20
4.10	Core Unit Label.....	20
4.11	Camera Module CMOS 0.3M.....	21
4.12	Film RF hole.....	22
4.13	Conductive WIFI Grounding Gasket.....	23
4.14	Loudspeaker & Speaker Adhesive	24
4.15	Camera Module CMOS 8M.....	26
4.16	Link FPC.....	28
4.17	Receiver & Receiver Adhesive.....	29
4.18	Coaxial Cable.....	31
4.19	SUB Board Assy & Sub PBA Adhesive	32
4.20	Liquid Intrusion Label.....	34
4.21	SIM Board Assy & RF Shielding Cover & SIM conductive adhesive	36
4.22	Board Swap – Replacement	38
4.23	Board Swap – Change Label	38
4.24	Board Swap – Customize of Software	38
5	Reassembly.....	39
5.1	Front Cover LCM TP Assembly.....	39
5.2	Main PBA (a) & Coaxial Cable (b)	40
5.3	Rear Cover Assy.....	45
5.4	Battery Cover Assy	47



make.believe

Working Instruction Repair Instruction Mechanical/

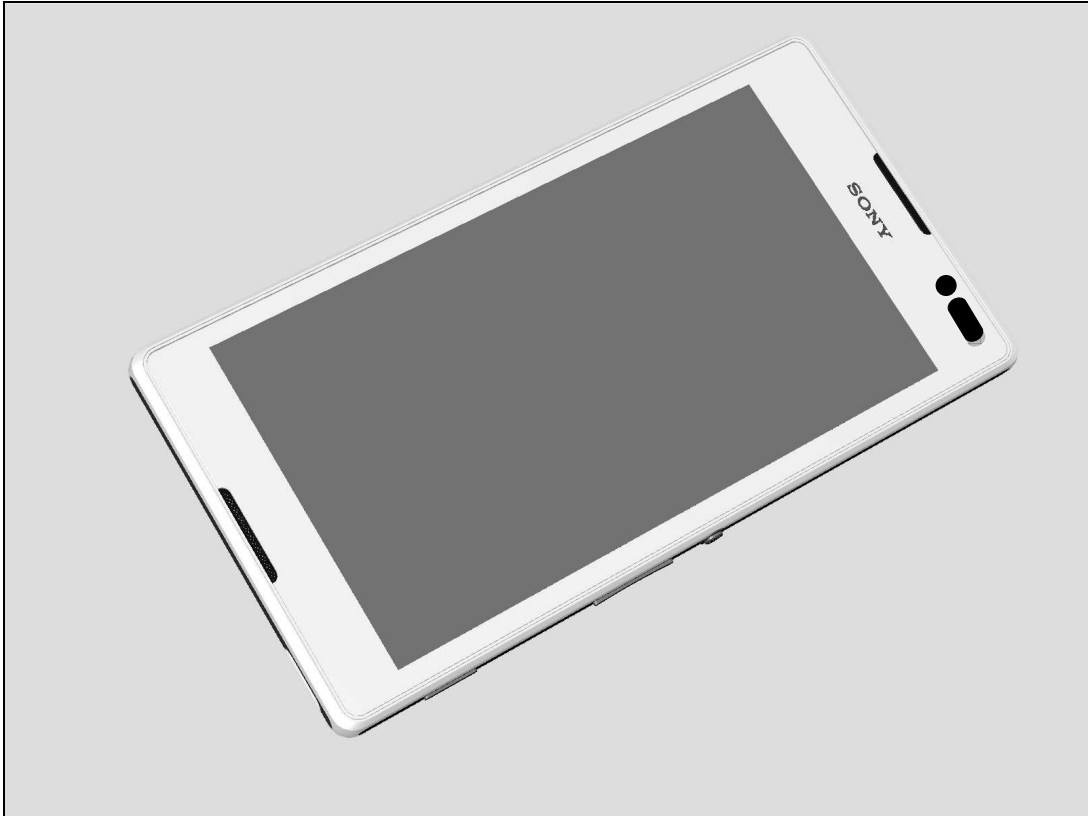
6 Country of Origin Barcodes for Brazil/VIVO Labels..... 49

7 Revision History 50

***For general information about mechanical repair related issues, refer to
1220-1333: Generic Repair Manual - mechanical***

1 Exterior Views

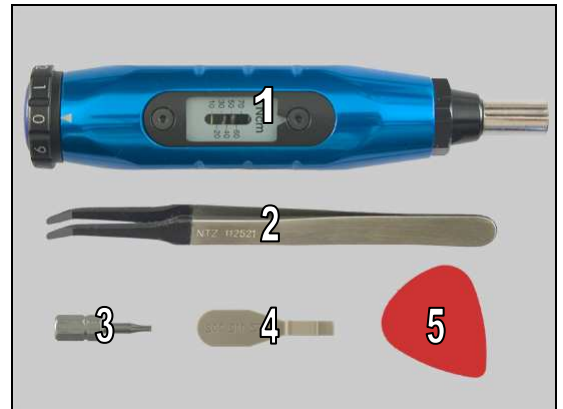
1.1 C2305, S39h



2 Tools

SPECIAL TOOLS

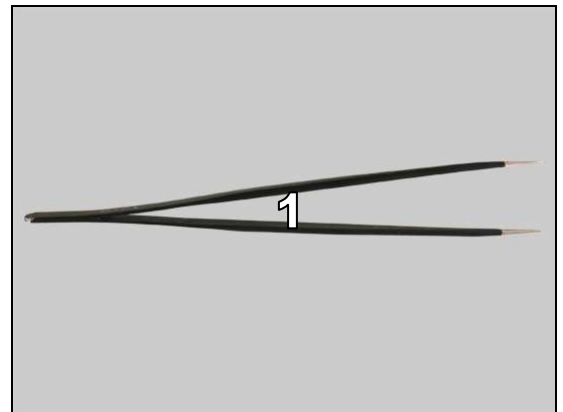
1. Torque Screwdriver
2. Flex Film Assembly Tool
3. Bits (T5)
4. Front Opening Tool
5. Guitar Pick



For part no's on the tools above, refer to the 'Tools Catalogue/Matrix'!

STANDARD TOOLS

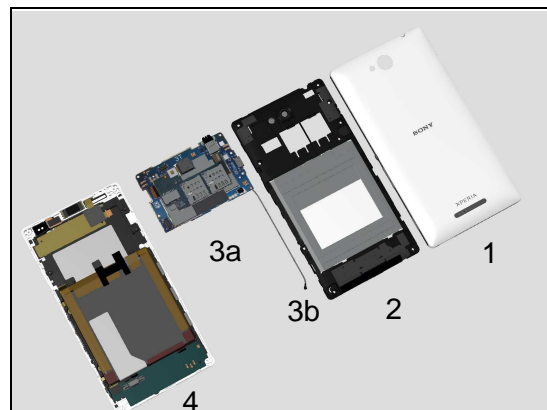
1. Tweezers



3 Disassembly

The disassembly is done in the following order:

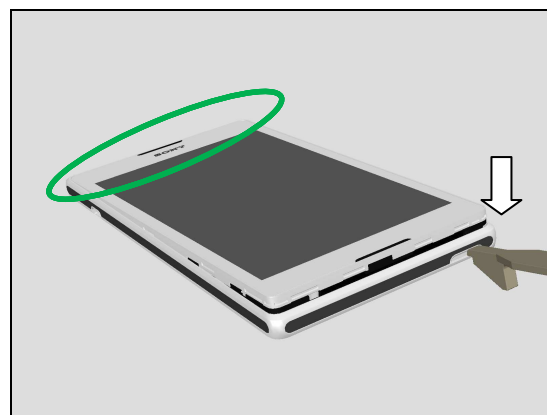
1. Battery Cover Assy
2. Rear Cover Assy
3. Main PBA (a) & Coaxial Cable (b)
4. Front Cover LCM TP Assy



3.1 Battery Cover Assy

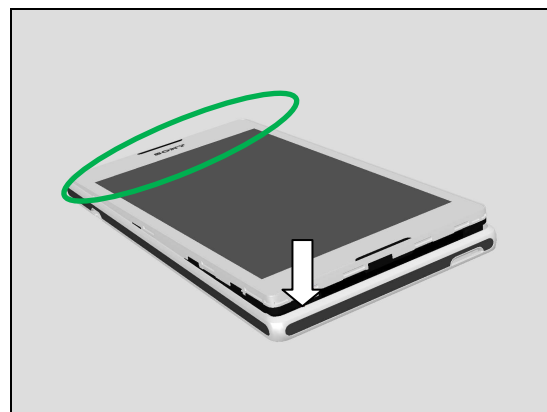
Insert Front Opening tool into the gap as shown in picture to release the hooks of the Battery Cover Assy.

Hold phone Top side at circle area while opening hooks!



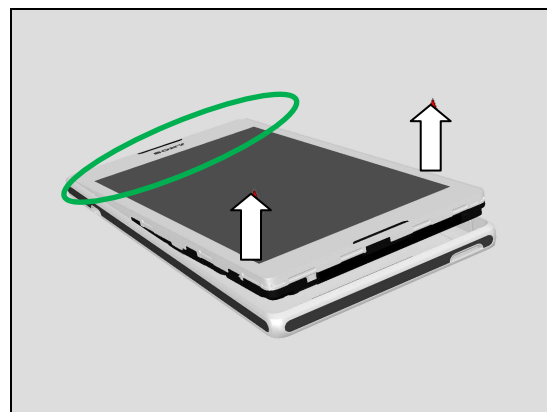
Press the other side down as shown in picture.

Hold phone Top side at circle area while opening hooks!

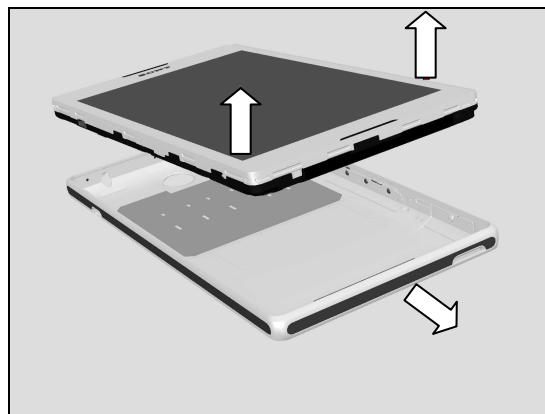


Take Phone bottom side out from Battery Cover Assy.

Hold phone Top side at circle area while opening hooks!



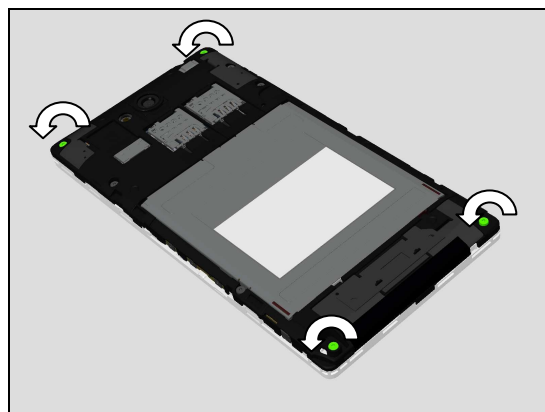
Remove the Battery Cover Assy.



3.2 Rear Cover Assy

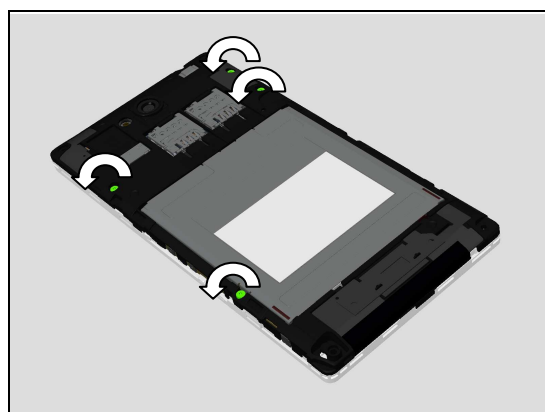
Remove these four Screws(Screw TORX 1.6mm 4.5mm Black) by using a screwdriver with Bits (T5).

Scrap! Not to be reused!



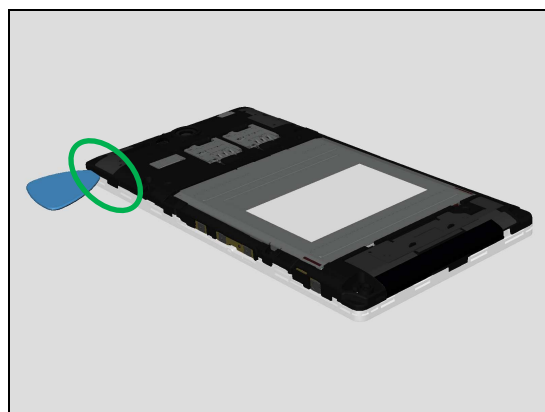
Remove these four Screws(Screw TORX 1.6mm 2.8mm Black) by using a screwdriver with Bits (T5).

Scrap! Not to be reused!



Insert Guitar Pick as shown in picture to release this position hook.

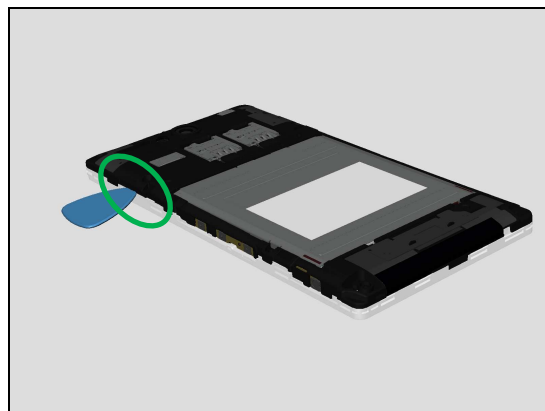
Do not slide Guitar Pick along phone side!



Disassembly

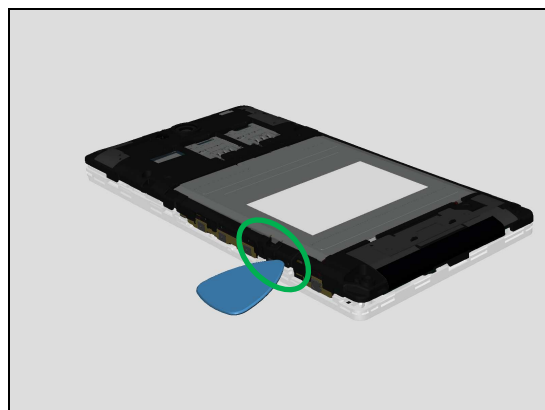
Insert Guitar Pick as shown in picture to release this position hook.

Do not slide Guitar Pick along phone side!



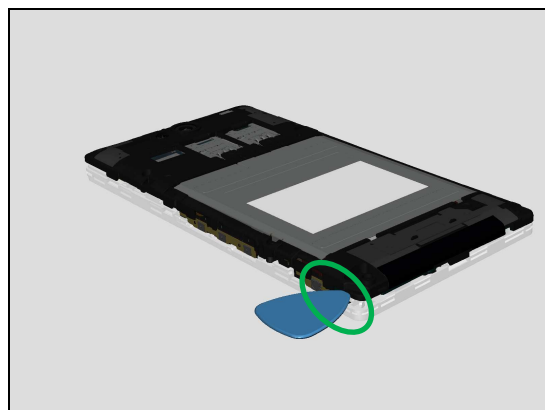
Insert Guitar Pick as shown in picture to release this position hook.

Do not slide Guitar Pick along phone side!



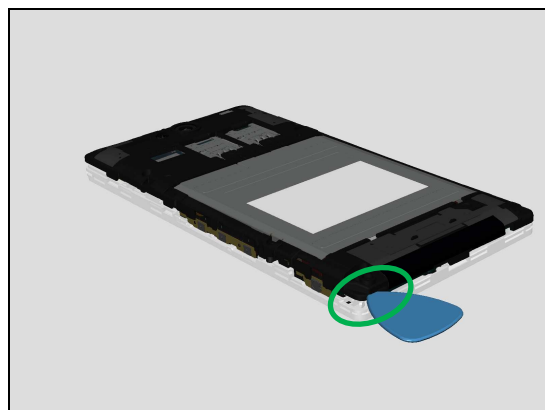
Insert Guitar Pick as shown in picture to release this position hook.

Do not slide Guitar Pick along phone side!



Insert Guitar Pick as shown in picture to release this position hook.

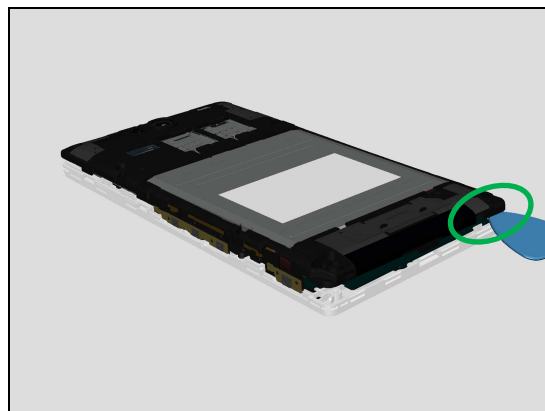
Do not slide Guitar Pick along phone side!



Disassembly

Insert Guitar Pick as shown in picture to release this position hook.

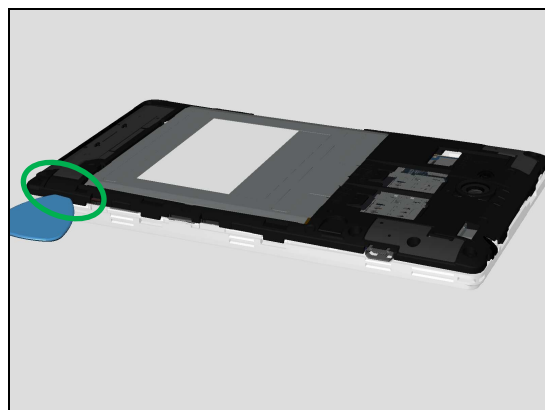
Do not slide Guitar Pick along phone side!



Turn around the phone to the 3rd side.

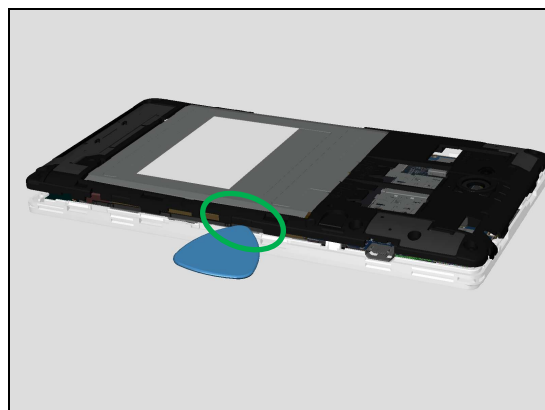
Insert Guitar Pick as shown in picture to release this position hook.

Do not slide Guitar Pick along phone side!



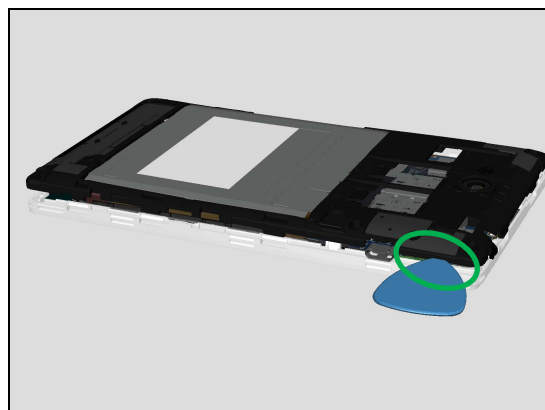
Insert Guitar Pick as shown in picture to release this position hook.

Do not slide Guitar Pick along phone side!



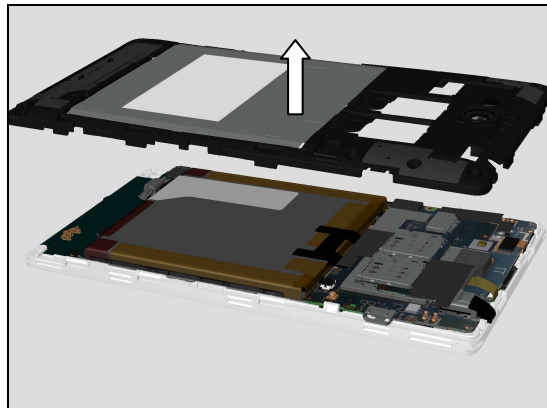
Insert Guitar Pick as shown in picture to release this position hook.

Do not slide Guitar Pick along phone side!

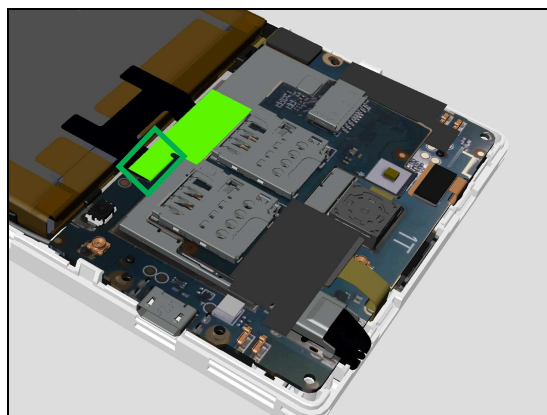


Disassembly

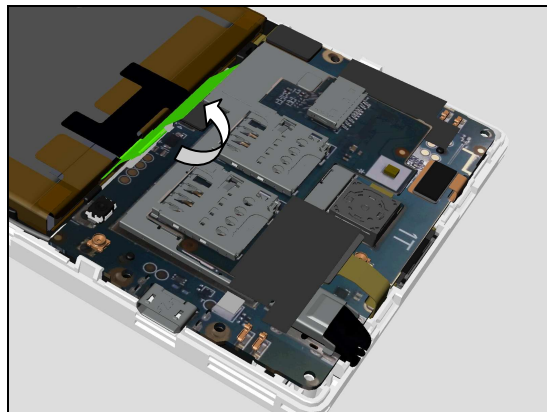
Remove the Rear Cover Assy.



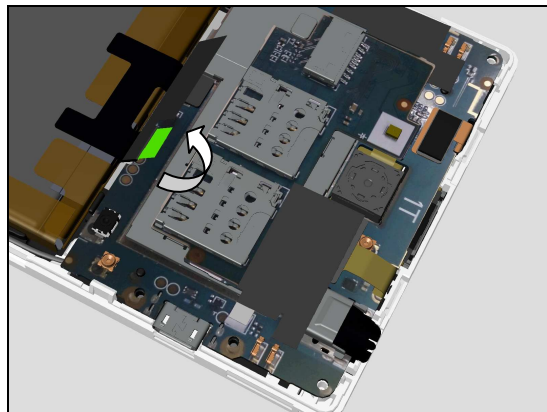
Battery FPC Mylar is folded under Battery FPC at shown area.



Turn around the Battery FPC Mylar with Battery FPC from Main PBA.

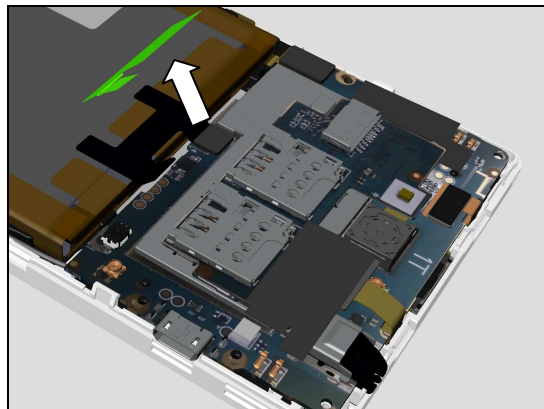


Turn around the folded Battery Mylar FPC from Battery FPC.

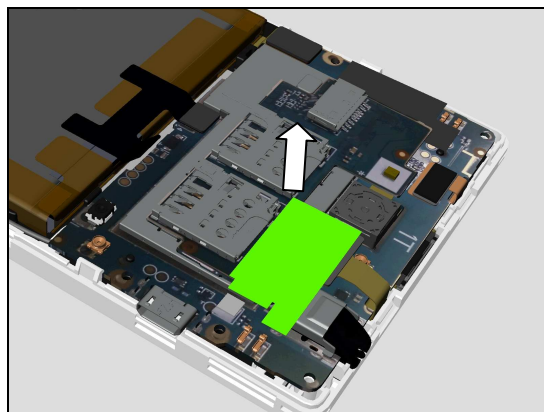


Disassembly

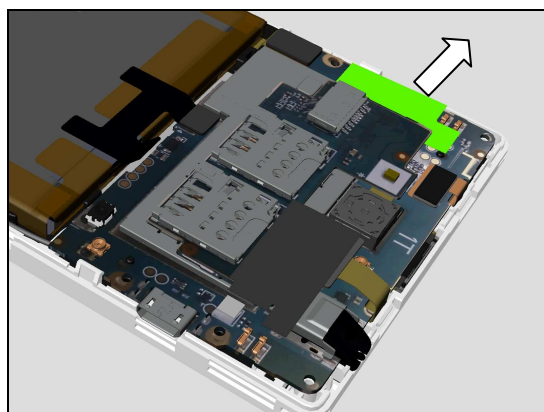
Remove the Battery Mylar FPC.



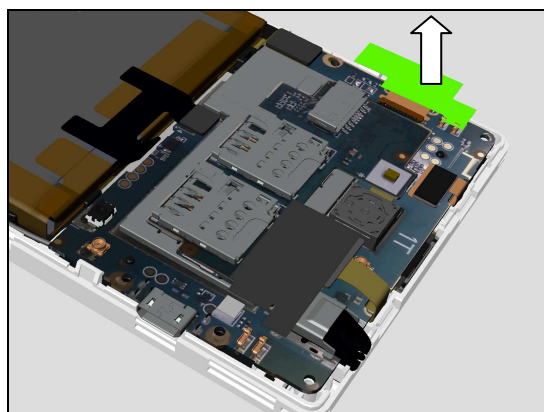
Remove the TP FPC MYLAR.



Take out the LCM ZIF MYLAR under SIM Board Assy first.

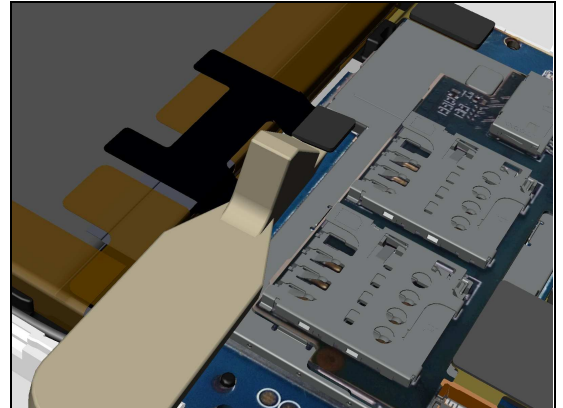


Remove the LCM ZIF MYLAR.

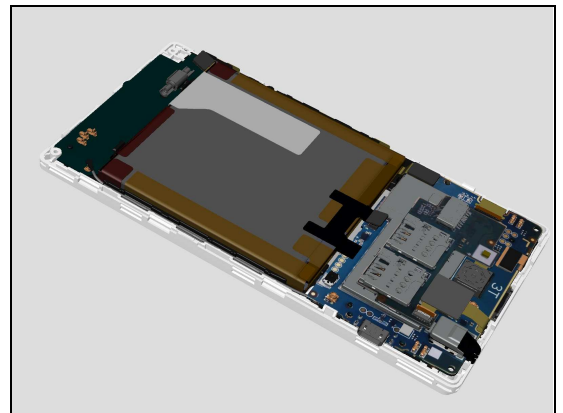


Disassembly

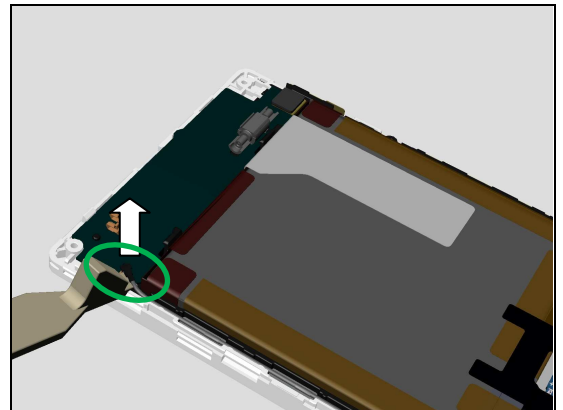
Open Battery FPC BtB Connector using Front Opening Tool.



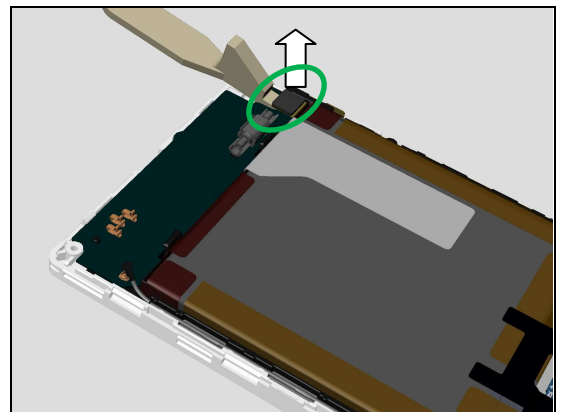
The Core unit as shown in picture.



Open the Coaxial Cable connector on SUB Board Assy.



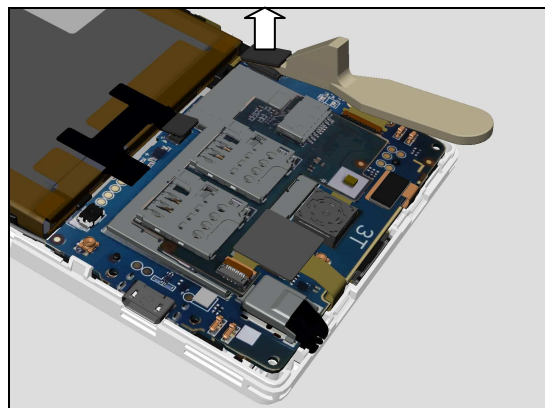
Open the Link FPC connector on SUB Board Assy.



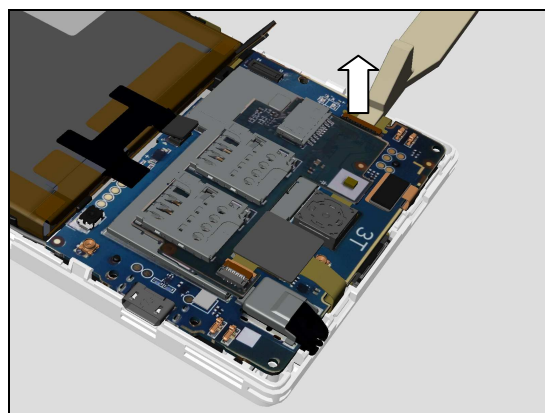
Disassembly

3.3 Main PBA (a) & Coaxial Cable (b)

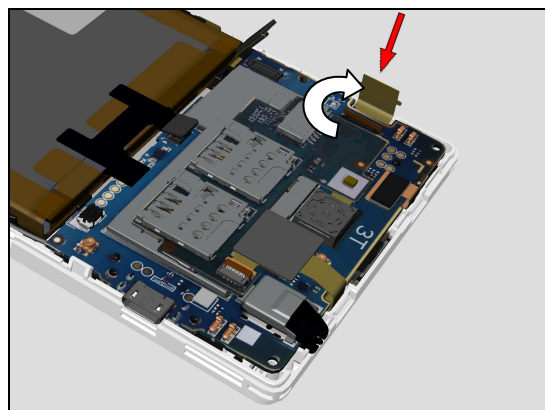
Open the Link FPC connector on Main PBA.



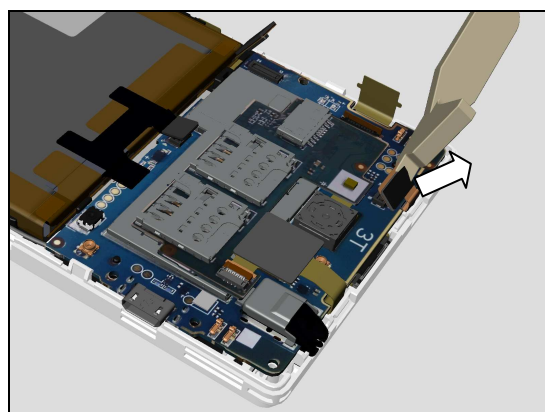
Open the LCM ZIF connector.



Pull out the LCM FPC from its ZIF connector.

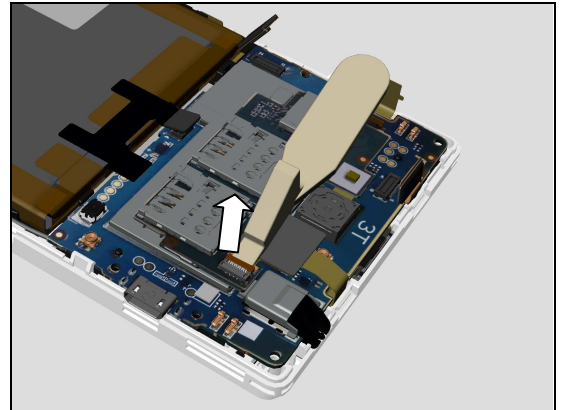


Open the Front Camera BtB connector.

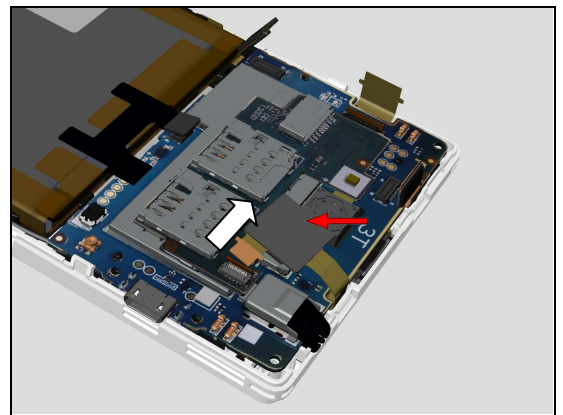


Disassembly

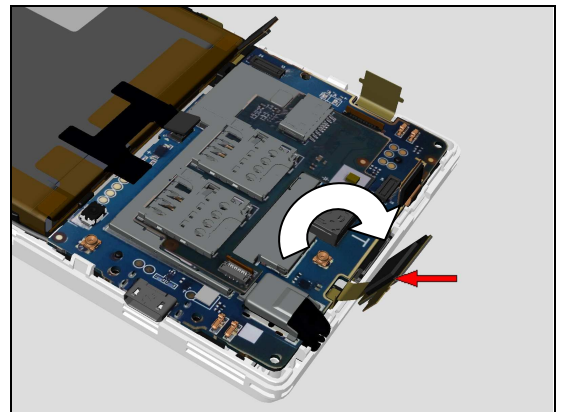
Open the Touch Panel ZIF connector.



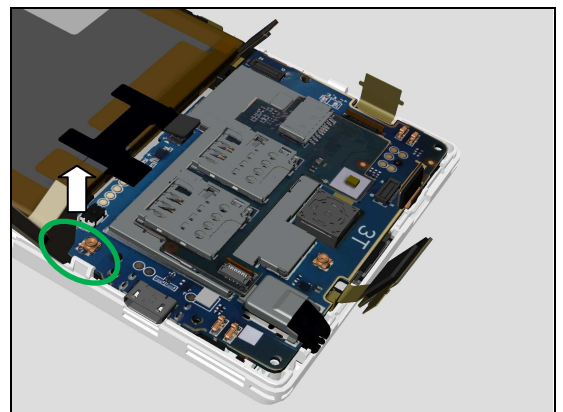
Pull out the Touch Panel FPC.



Turn around the Touch Panel FPC from Main PBA.

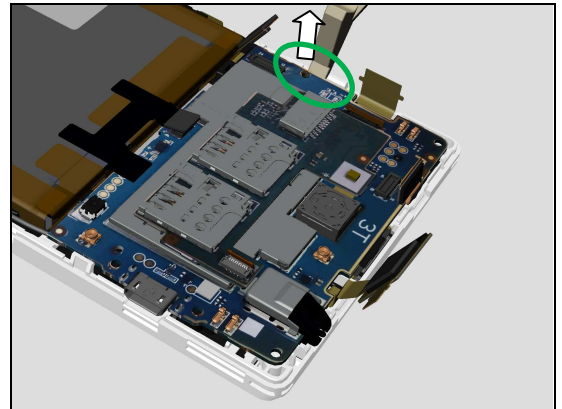


Open the Main PBA hook using Front Opening Tool.

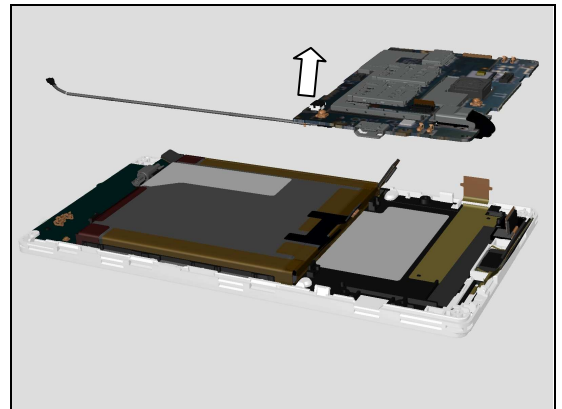


Disassembly

Open the other side hook of Main PBA.

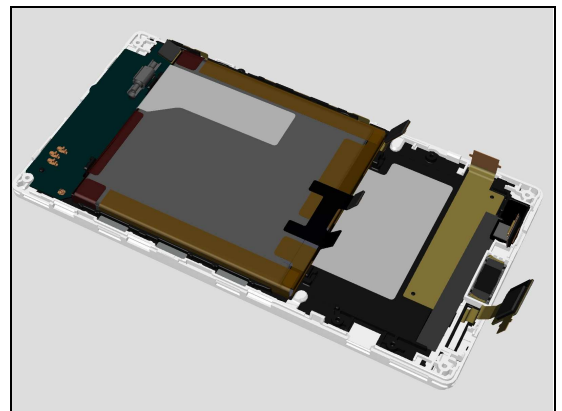


Remove the Main PBA and Coaxial Cable.



3.4 Front Cover LCM TP Assy

Front Cover LCM TP Assy as shown in picture.



4 Replacement

4.1 Battery Cover Assy

Follow the 3.1 Disassembly instructions!

Prepare a new Battery Cover Assy.

Follow the 5.4 Reassembly instructions!



4.2 Rear Cover Assy

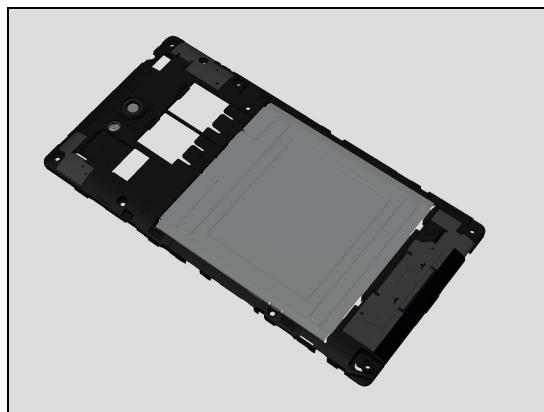
Follow the 3.1 – 3.2 Disassembly instructions!

Follow the 4.12 Removal instructions!

Prepare a new Rear Cover Assy.

Follow the 4.12, 4.8 Installation instructions!

Follow the 5.3 -- 5.4 Reassembly instructions!

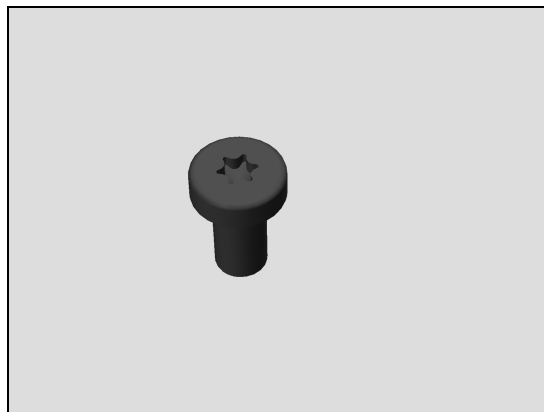


4.3 Screw TORX 1.6mm 2.8mm Black

Follow the 3.1 – 3.2 Disassembly instructions!

Prepare new Screws.

Follow the 5.3 – 5.4 Reassembly instructions!



4.4 Screw TORX 1.6mm 4.5mm Black

Follow the 3.1 – 3.2 Disassembly instructions!

Prepare new Screws.

Follow the 5.3 – 5.4 Reassembly instructions!



Replacement

4.5 Front Cover LCM TP Assy

Follow the 3.1 – 3.4 Disassembly instructions!

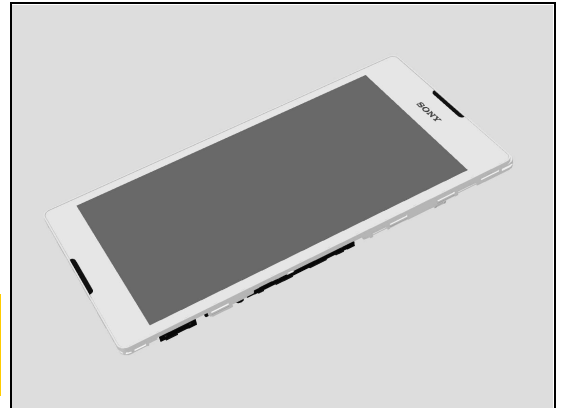
Follow 4.6, 4.17, 4.14 Removal instructions.

Prepare a new Front Cover LCM TP Assembly.

Follow 4.6, 4.17, 4.14 Installation instructions.

Follow the 5.1 – 5.4 Reassembly instructions!

Note: Calibrate the Proximity sensor/Light sensor 1277-0611 Trouble Shooting Application – mechanical after replacement.

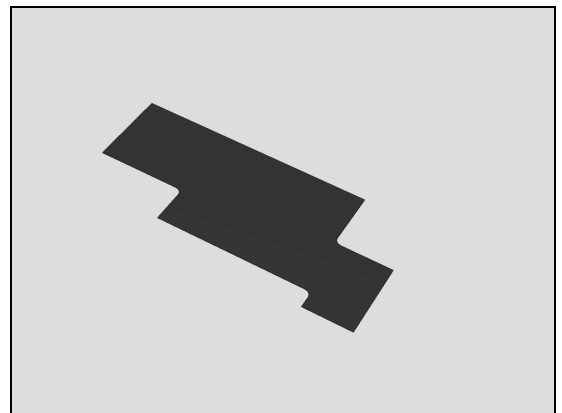


4.6 LCM ZIF MYLAR

Follow the 3.1 – 3.2 Disassembly instructions!

Prepare new LCM ZIF MYLAR.

Follow the 5.3 – 5.4 Reassembly instructions!

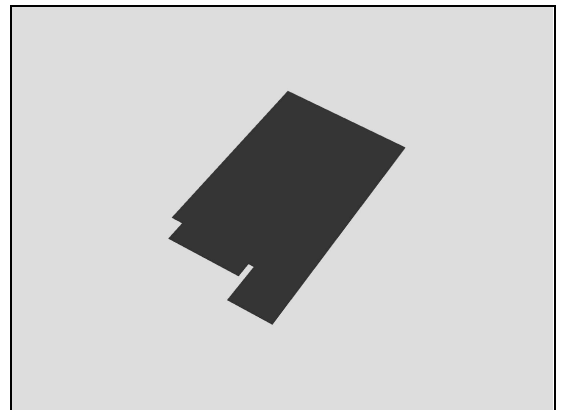


4.7 TP FPC MYLAR

Follow the 3.1 – 3.2 Disassembly instructions!

Prepare new TP FPC MYLAR.

Follow the 5.3 – 5.4 Reassembly instructions!



Replacement

4.8 Battery 2330.0 mA & Embedded Battery Adhesive

Follow the 3.1 – 3.4 Disassembly instructions!

Carry out the Removal as described below.

Prepare new Battery 2330.0 Ma \$ Embedded Battery Adhesive.

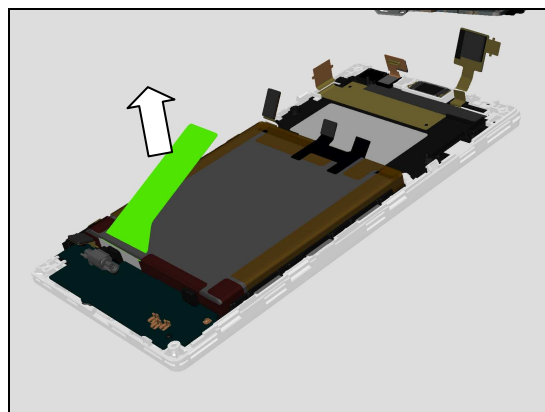
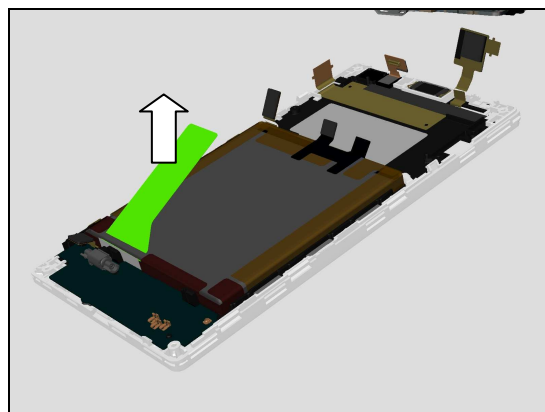
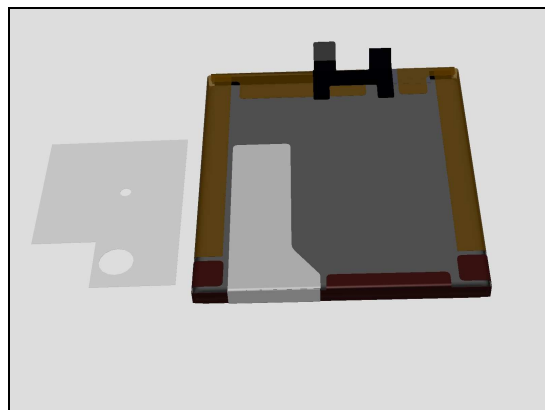
Carry out the Installation as described below.

Follow the 5.1 – 5.4 Reassembly instructions!

Removal

Pull the white tape on Battery 2330.0 mA as shown in picture to disassemble Battery 2330.0 mA.

Scrap! Do not reuse it.

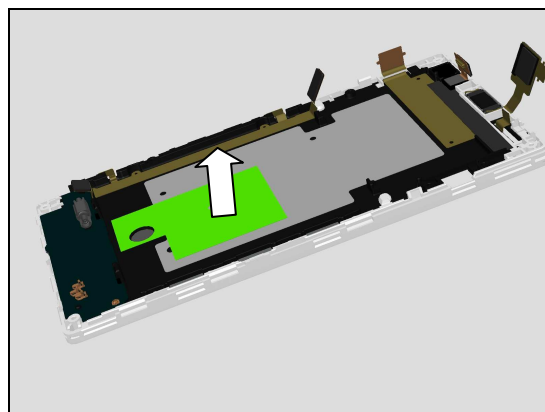


Remove the Battery 2330.0 mA carefully.

Scrap! Do not reuse it.

Remove the Embedded Battery Adhesive carefully.

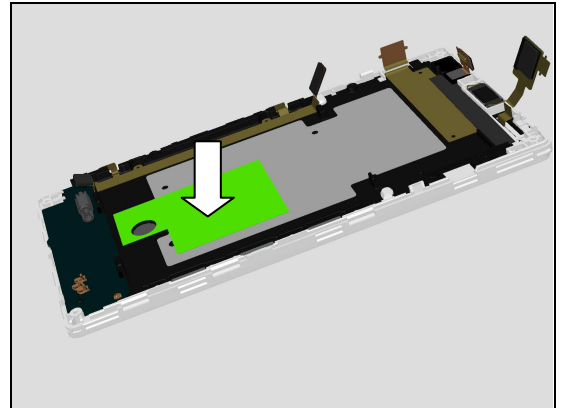
Scrap! Not to be reused.



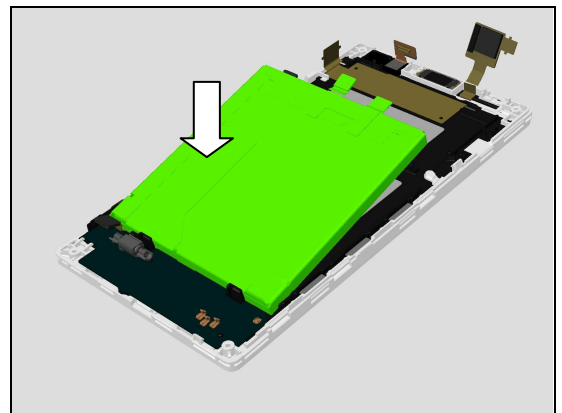
Replacement

Installation

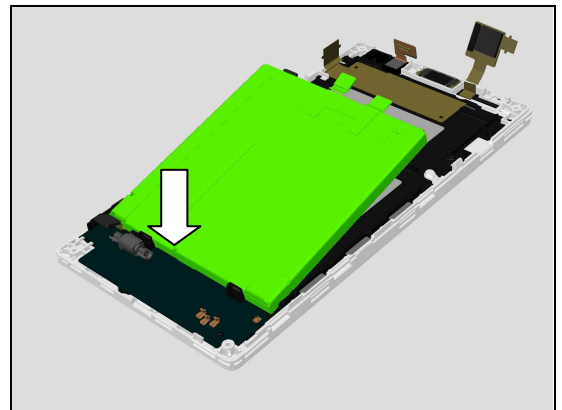
Attach a new Embedded Battery Adhesive carefully.



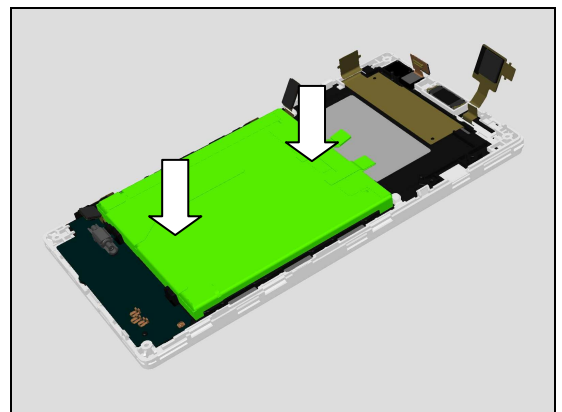
Attach a new Battery 2330.0 mA carefully.



Press down its bottom side firstly.



Press down both sides firmly to secure its attachment.



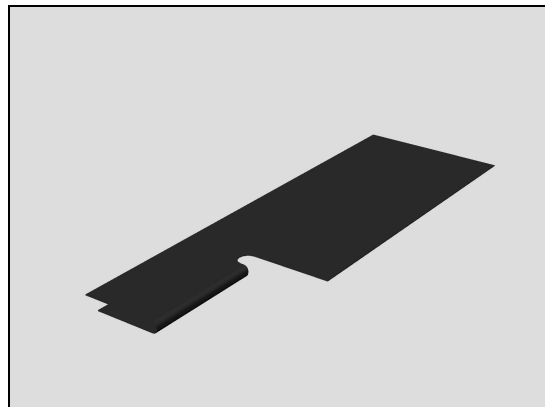
Replacement

4.9 Battery FPC Mylar

Follow the 3.1 – 3.2 Disassembly instructions!

Prepare a new Battery FPC Mylar.

Follow the 5.3 – 5.4 Reassembly instructions!



4.10 Core Unit Label

Follow the 3.1 Disassembly instructions!

Carry out the Removal as described below.

Prepare a new Core Unit Label.

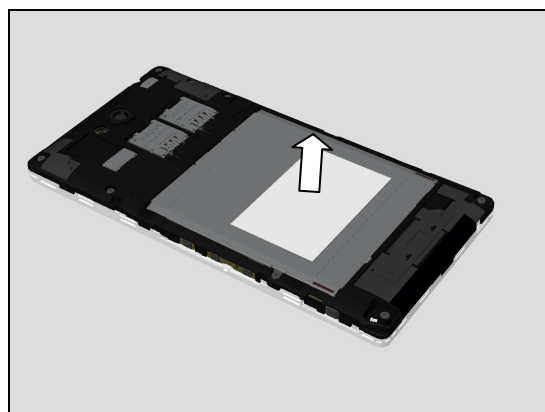
Carry out the Installation as described below.

Follow the 5.4 Reassembly instructions!



Removal

Peel off the Core Unit label from Rear Cover Assy.



Installation

Attach a new Core Unit Label carefully.

Align Core Unit Label with the mark on metal cover.

Only one Label is attached.



Replacement

4.11 Camera Module CMOS 0.3M

Follow the 3.1 – 3.4 Disassembly instructions!
Carry out the Removal as described below.
Prepare a new Camera Module CMOS 0.3M.
Carry out the Installation as described below.
Follow the 5.1 – 5.4 Reassembly instructions!

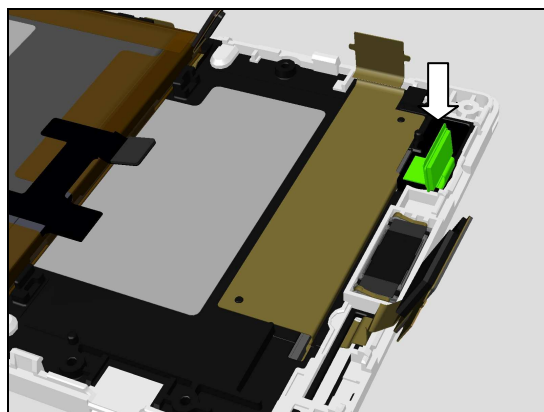
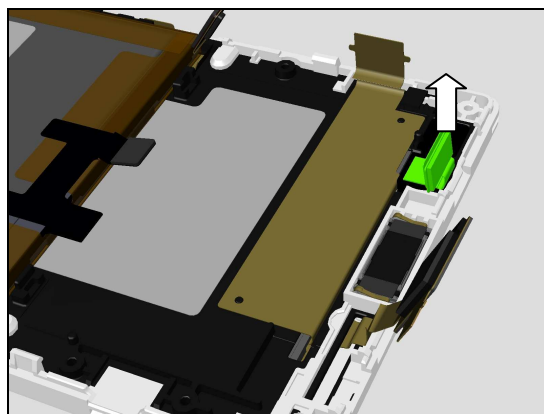
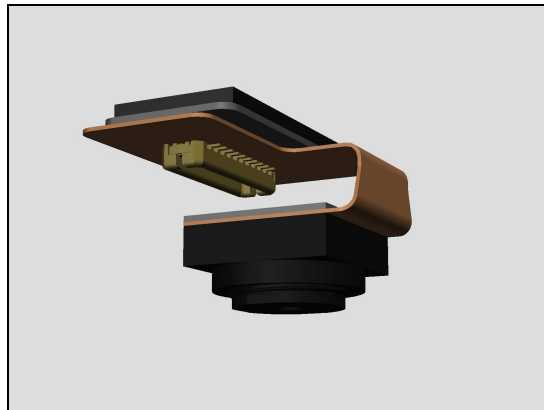
REMOVAL

Remove the Camera Module CMOS 0.3M.

INSTALLATION

Place a new Camera Module CMOS 0.3M in the correct position as shown in the picture.

Be careful, do not damage Camera Module CMOS 0.3M!



Replacement

4.12 Film RF hole

Follow the 3.1 Disassembly instructions!

Carry out the Removal as described below.

Prepare a new Film RF Hole.

Carry out the Installation as described below.

Follow the 5.4 Reassembly instructions!

REMOVAL

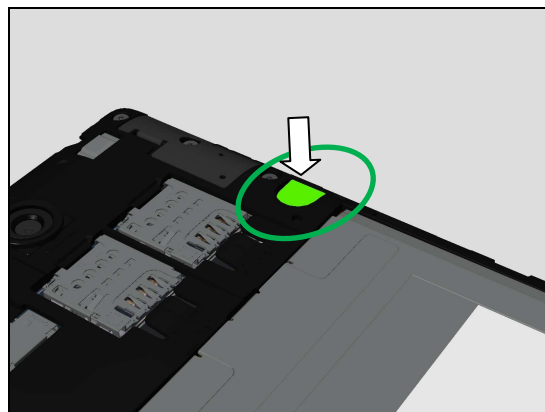
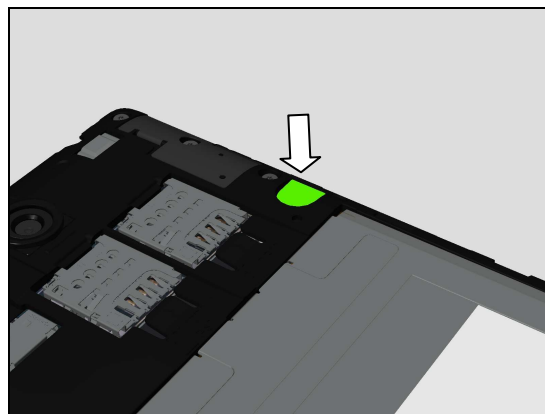
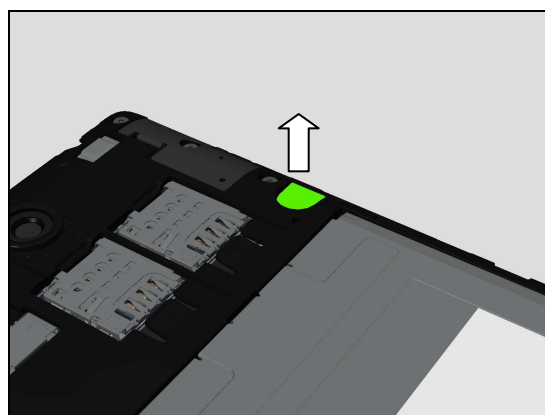
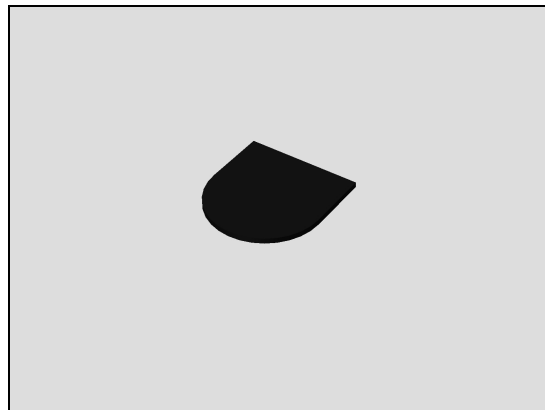
Peel off the Film RF Hole.

Scrap! Not to be reused!

INSTALLATION

Place a new Film RF Hole in the correct position as shown in the picture.

Press to secure its attachment.



Replacement

4.13 Conductive WIFI Grounding Gasket

Follow the 3.1 – 3.4 Disassembly instructions!

Carry out the Removal as described below.

Prepare a new Conductive WIFI Grounding Gasket.

Carry out the Installation as described below.

Follow the 5.1 – 5.4 Reassembly instructions!

REMOVAL

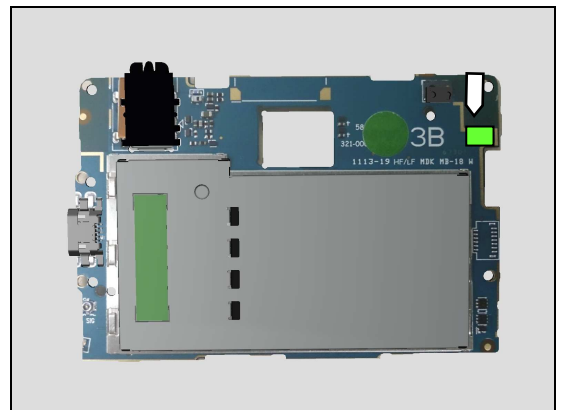
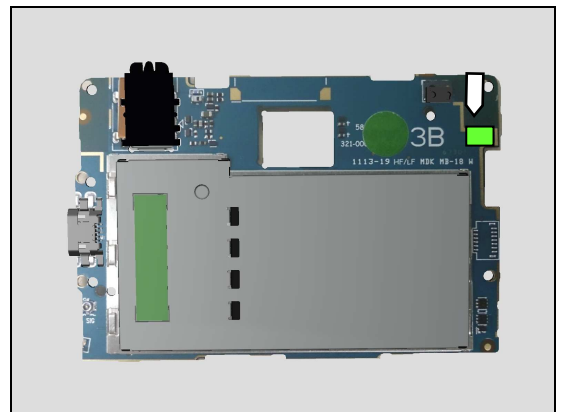
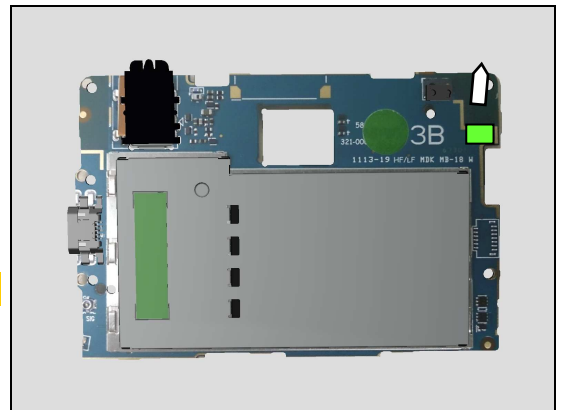
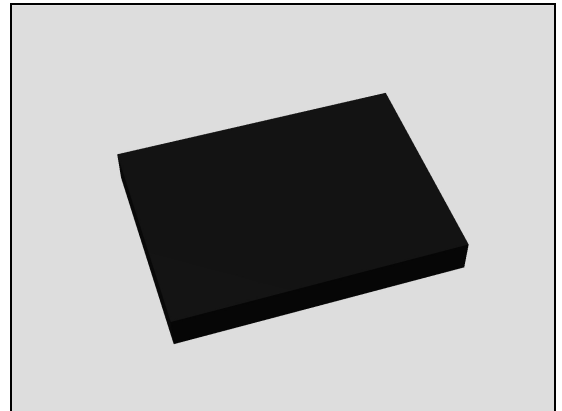
Peel off the Conductive WIFI Grounding Gasket from Main PBA.

Scrap! Not to be reused!

INSTALLATION

Place a new Conductive WIFI Grounding Gasket in the correct position as shown in the picture.

Press to secure its attachment.



Replacement

4.14 Loudspeaker & Speaker Adhesive

Follow the 3.1 – 3.2 Disassembly instructions!

Carry out the Removal as described below.

Prepare a new Loudspeaker and Speaker Adhesive.

Carry out the Installation as described below.

Follow the 5.3 – 5.4 Reassembly instructions!

REMOVAL

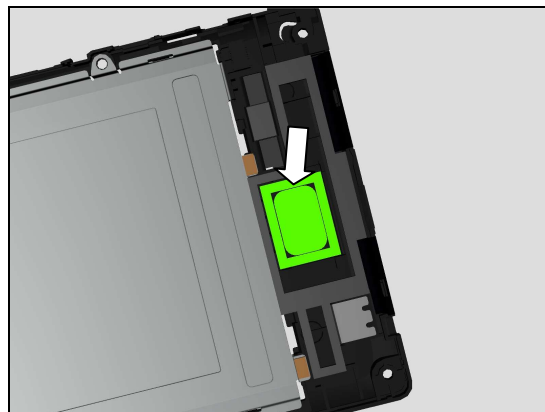
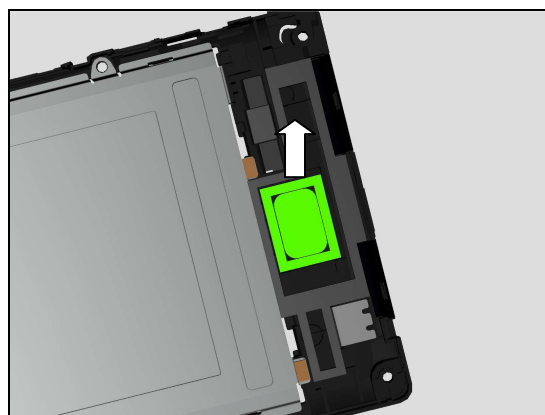
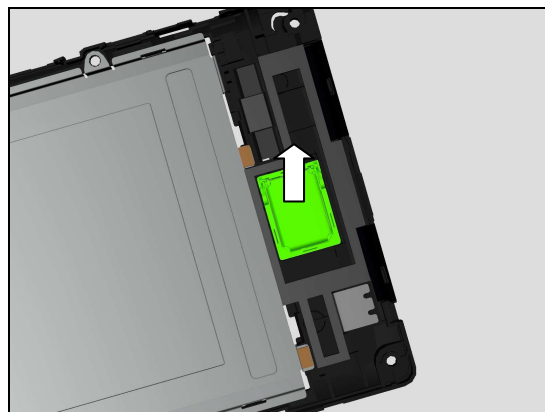
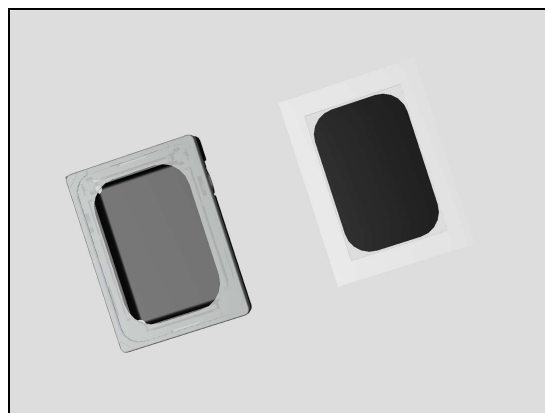
Detach the Loudspeaker by using a pair of tweezers.

Peel off the Speaker Adhesive.

Scrap! Not to be reused!

INSTALLATION

Place a new Speaker Adhesive in the correct position as shown in the picture.

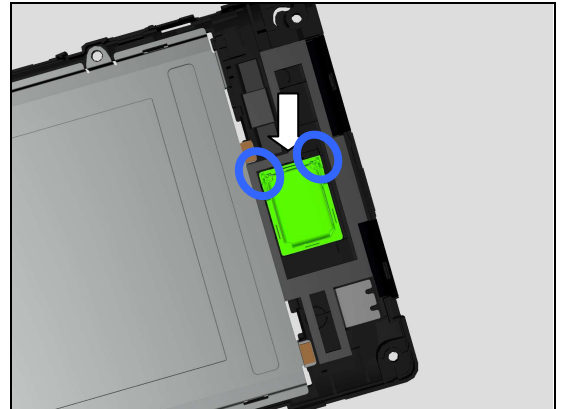


Replacement

Place a new Loudspeaker in the correct position.
Press to secure its attachment.

Make sure there is no adhesive residue.

Make sure the Pin direction is correct!



Replacement

4.15 Camera Module CMOS 8M

Follow the 3.1– 3.4 Disassembly instructions!

Follow the 4.19 removal instructions.

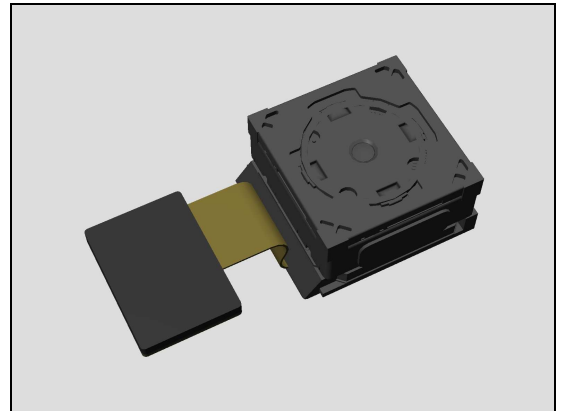
Carry out the Removal as described below.

Prepare a new Camera Module CMOS 8M.

Carry out the Installation as described below.

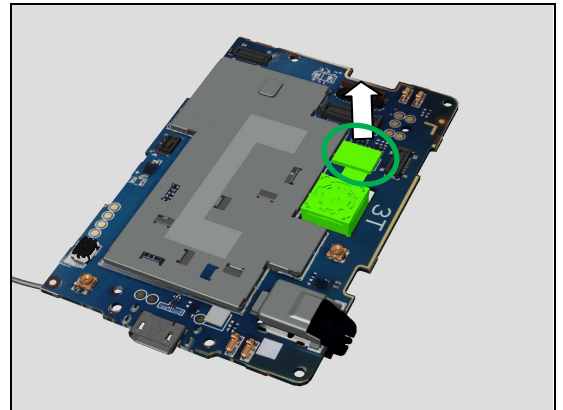
Follow the 4.19 Installation instructions.

Follow the 5.1 – 5.4 Installation instructions!

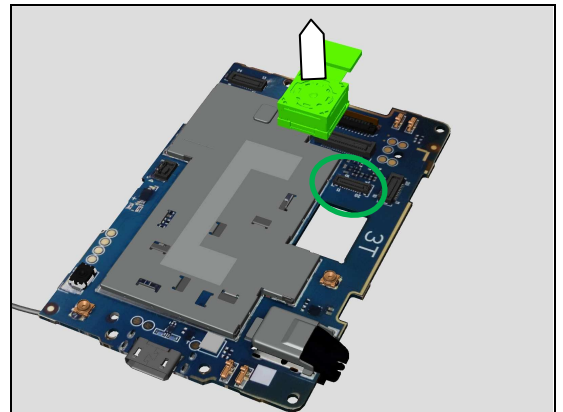


REMOVAL

Unsnap the BtB connector.

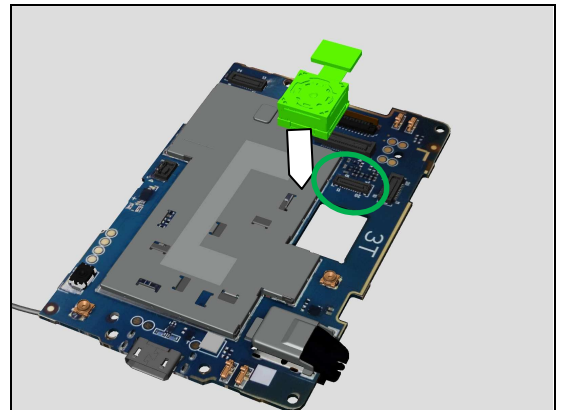


Push the Camera Module CMOS 8M from the cavity.
Remove the Camera Module CMOS 8M.



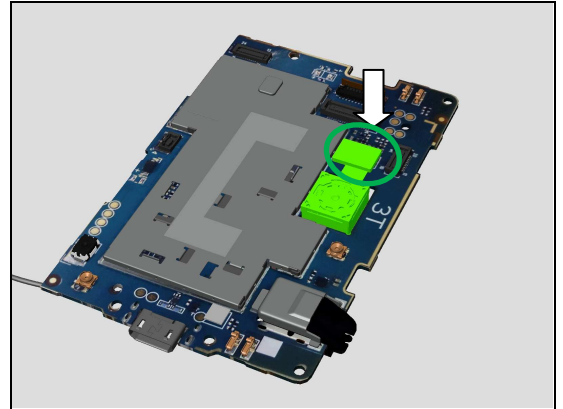
INSTALLATION

Assemble the new Camera Module CMOS 8M onto Main PBA.

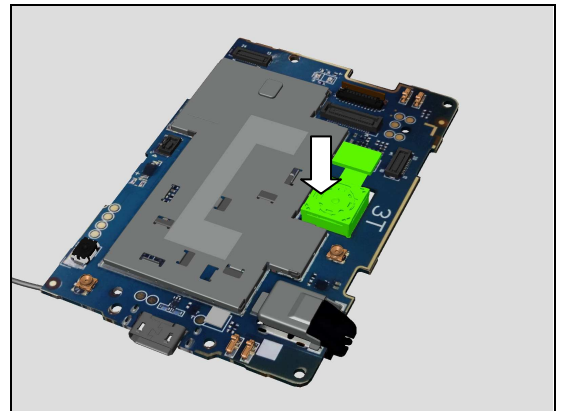


Replacement

Snap the BtB connector on Main PBA.



Place the Camera Module CMOS 8M into its cavity on Main PBA.



Replacement

4.16 Link FPC

Follow the 3.1 – 3.4 Disassembly instructions!

Follow 4.6 Removal instructions.

Carry out the Removal as described below.

Prepare a new Link FPC.

Carry out the Installation as described below.

Follow 4.6 Installation instructions.

Follow the 5.1 – 5.4 Reassembly instructions!

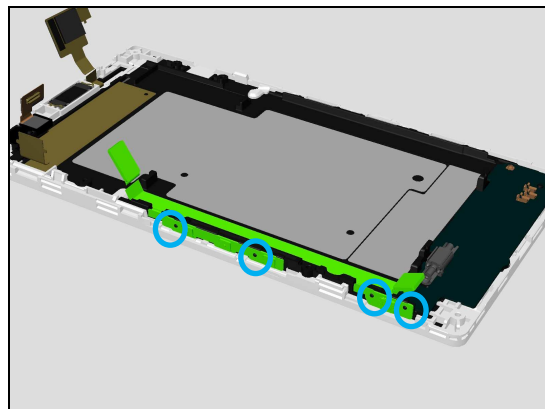
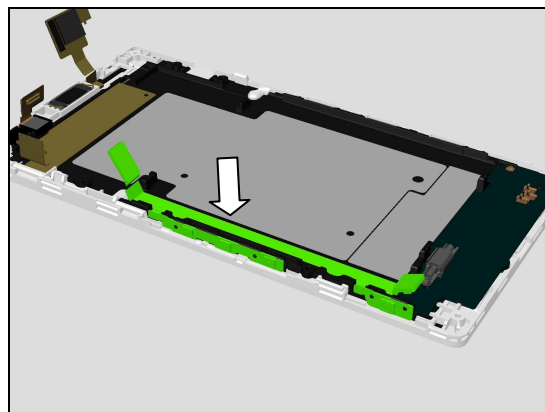
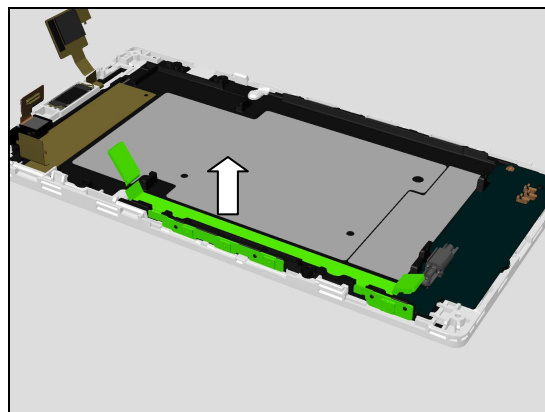
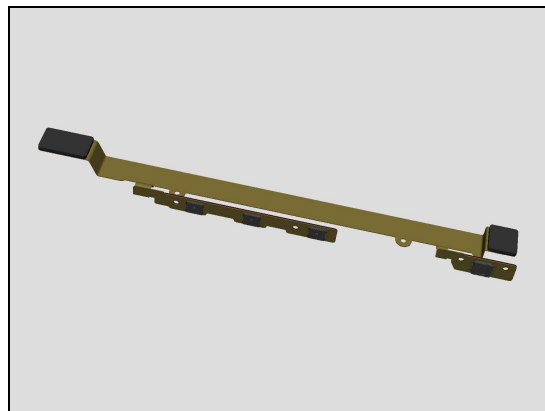
REMOVAL

Remove the Link FPC by using a Flex Film Assembly Tool.

INSTALLATION

Place a new Link FPC in the correct position as shown in the picture.

Press to secure its position.



Replacement

4.17 Receiver & Receiver Adhesive

Follow the 3.1 – 3.4 Disassembly instructions!

Carry out the Removal as described below.

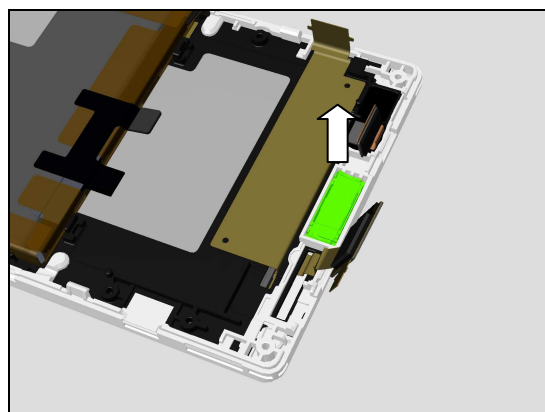
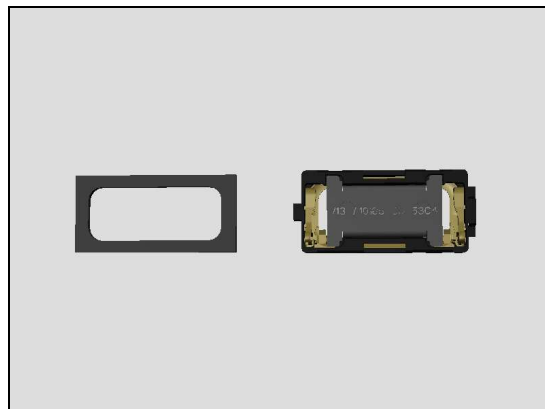
Prepare a new Receiver and Receiver Adhesive.

Carry out the Installation as described below.

Follow the 5.1 – 5.4 Reassembly instructions!

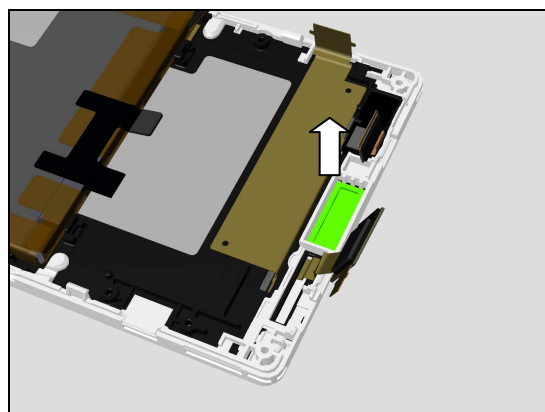
REMOVAL

Detach the Receiver by using a pair of tweezers.



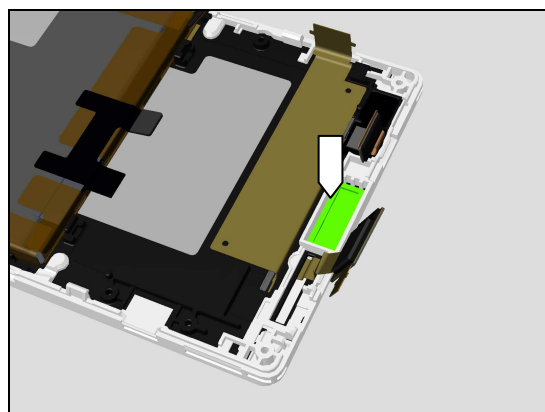
Clean the remaining foil of the Receiver Adhesive on the Front Cover LCM TP Assembly.

Scrap! The Receiver Adhesive can't be reused!



INSTALLATION

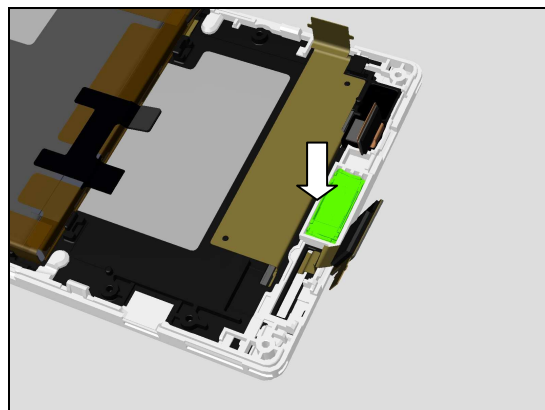
Place a new Receiver Adhesive in the correct position.



Replacement

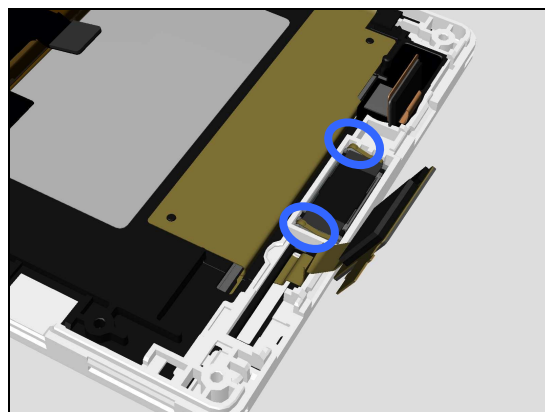
Place a new Receiver in the correct position.

Don't touch the Receiver pins!



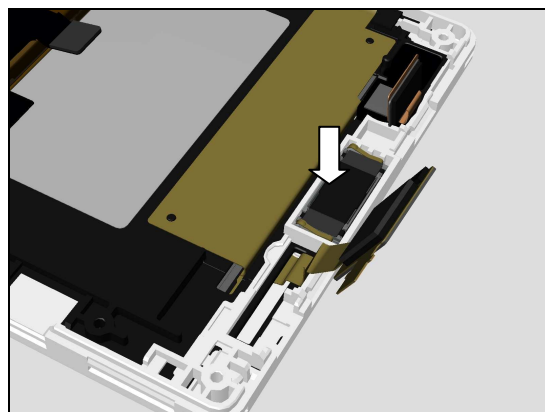
Check Receiver's pin correct direction as shown in the picture!

Don't touch the Receiver pins!



Press to secure its attachment.

Do not touch the Receiver pins!



Replacement

4.18 Coaxial Cable

Follow the 3.1 – 3.4 Disassembly instructions!

Prepare a new Coaxial Cable.

Follow the 5.1 – 5.4 Reassembly instructions!

REMOVAL

Remove the Coaxial Cable from Main PBA.

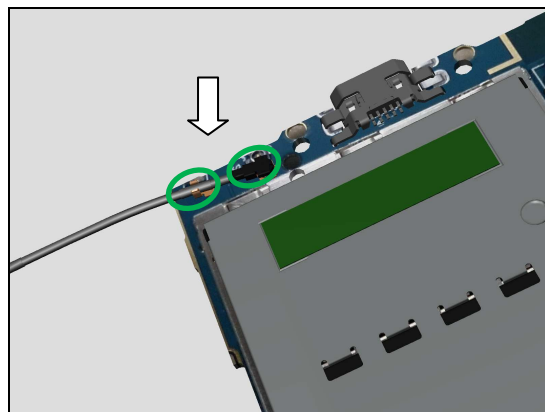
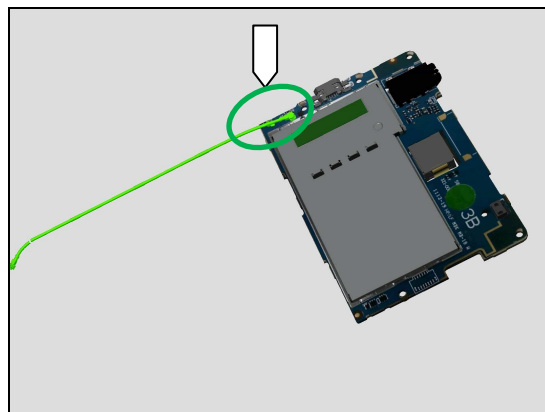
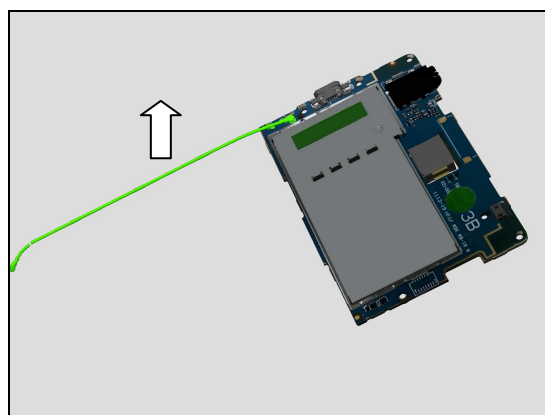
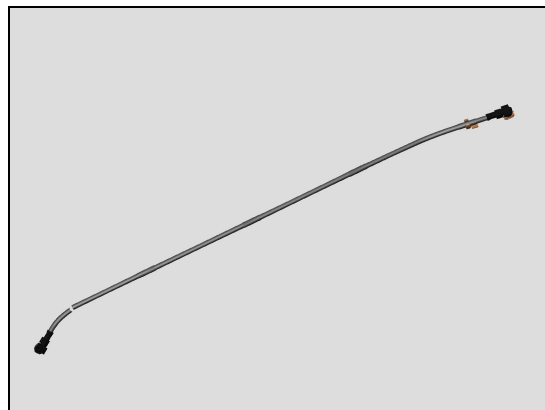
INSTALLATION

Place the Coaxial Cable in the correct position.

Note: pay more attention about its direction.

Press to secure its position.

Note: pay more attention about its direction.



Replacement

4.19 SUB Board Assy & Sub PBA Adhesive

Follow the 3.1 – 3.2 Disassembly instructions!

Carry out the Removal as described below.

Prepare new SUB Board Assy & Sub PBA Adhesive.

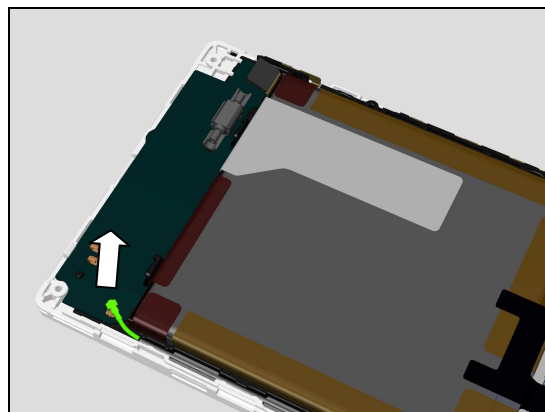
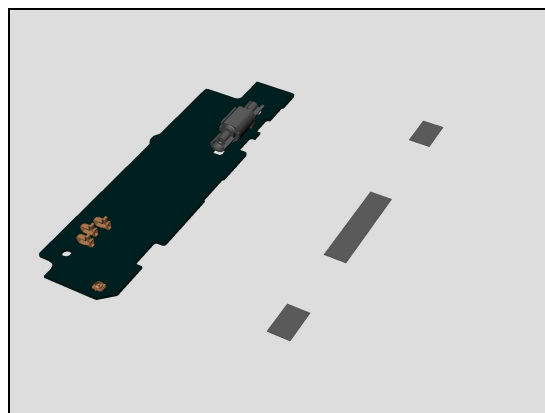
Follow 4.18 Installation instructions.

Carry out the Installation as described below.

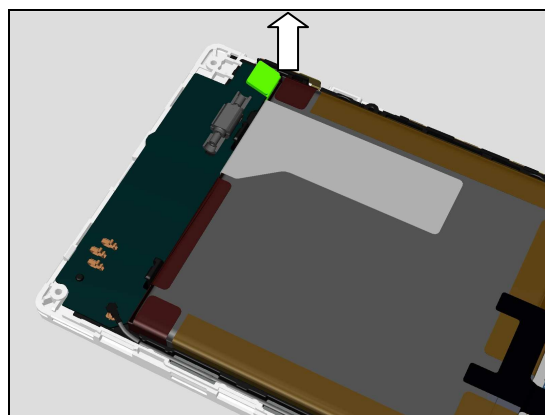
Follow the 5.3 – 5.4 Reassembly instructions!

REMOVAL

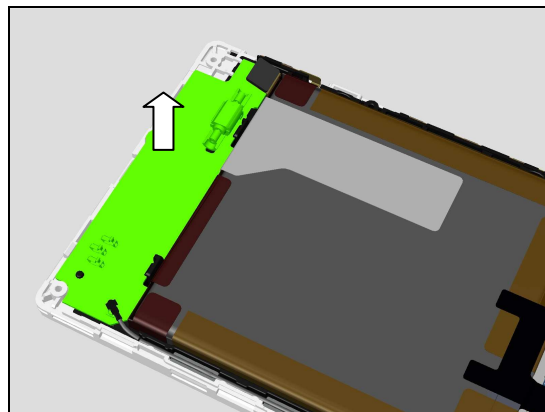
Open the Coaxial Cable Connector on SUB Board Assy.



Open the Link FPC connector on SUB Board Assy.



Remove the SUB Board Assy carefully.

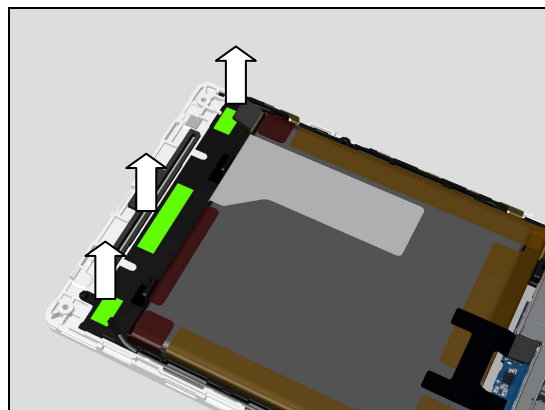


Replacement

Remove the Sub PBA Adhesive carefully.

Note: the Sub PBA Adhesive contains three parts as shown.

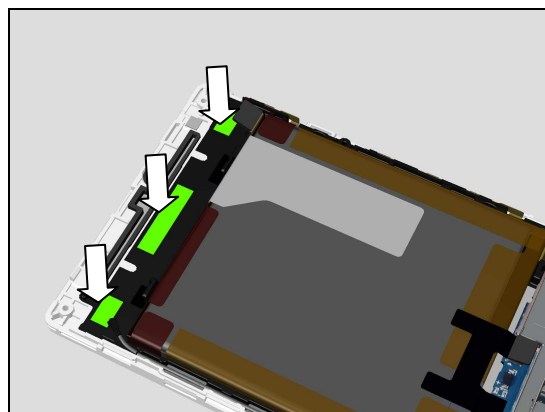
Scrap, not to be reused!



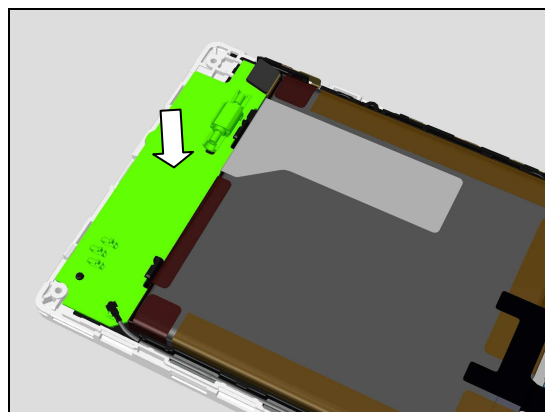
INSTALLATION

Prepare a new Sub PBA Adhesive on Front Cover LCM TP Assy.

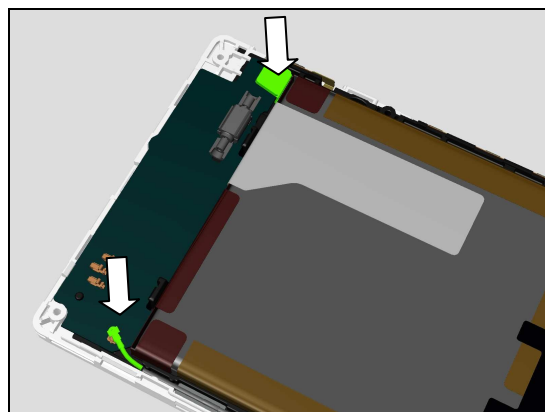
Note: the Sub PBA Adhesive contains three parts on one sheet as shown.



Place a new SUB Board Assy in correct position as shown. Press to secure its attachment.



Close two connectors on SUB Board Assy.



Replacement

4.20 Liquid Intrusion Label

Follow the 3.1 – 3.3 Disassembly instructions!

Carry out the Removal as described below.

Prepare the new Liquid Intrusion Label.

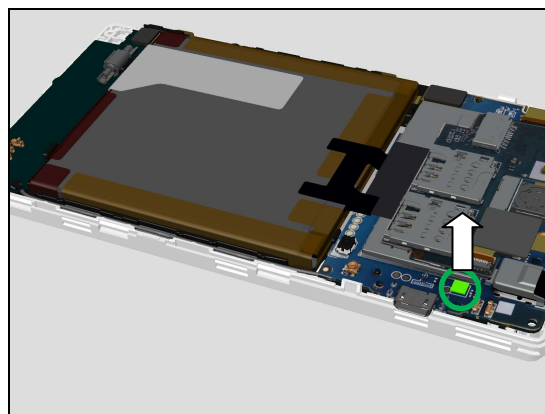
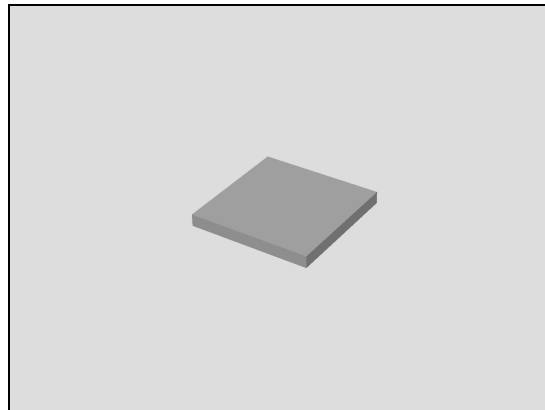
Carry out the Installation as described below.

Follow the 5.4 – 5.6 Reassembly instructions!

REMOVAL

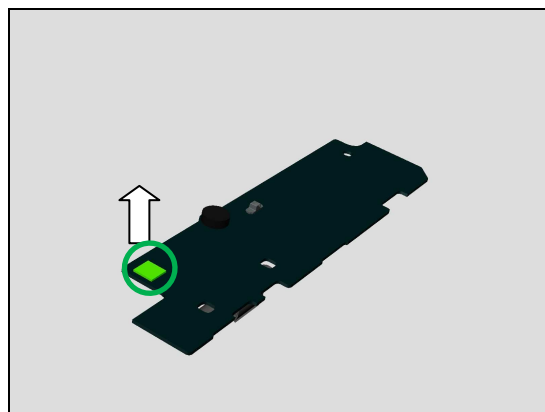
There are two Liquid Intrusion Labels on the phone.
Remove the one on Main PBA.

Scrap! Not to be reused!



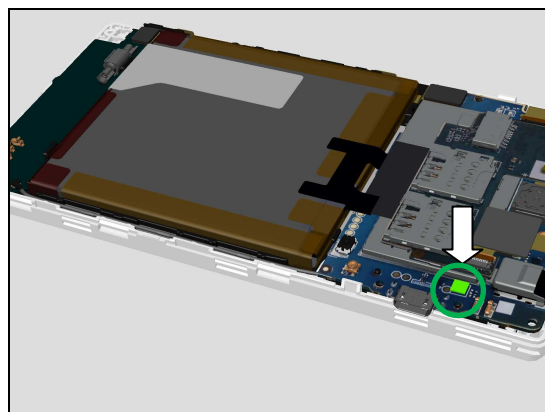
Remove the other one on SUB Board Assy.

Scrap! Not to be reused!



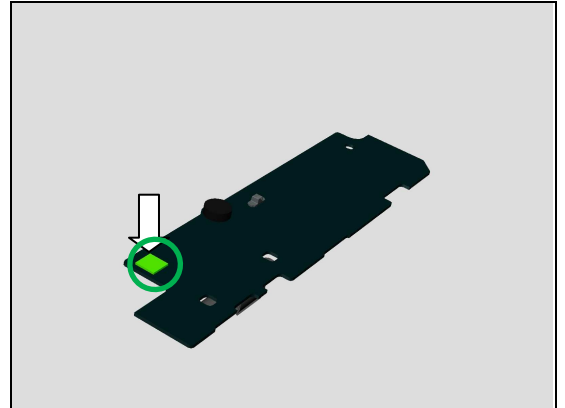
INSTALLATION

Place a new Liquid Intrusion Label on Main PBA.



Replacement

Place a new Liquid Intrusion Label on SUB Board Assy.



Replacement

4.21 SIM Board Assy & RF Shielding Cover & SIM conductive adhesive

Follow the 3.1 – 3.2 Disassembly instructions!

Carry out the Removal as described below.

Prepare the new SIM Board Assy RF Shielding Cover with Adhesive.

Carry out the Installation as described below.

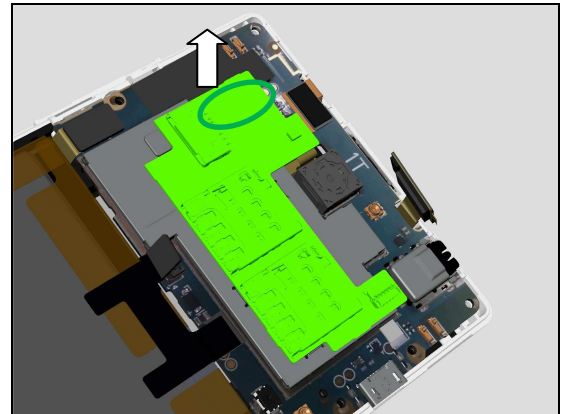
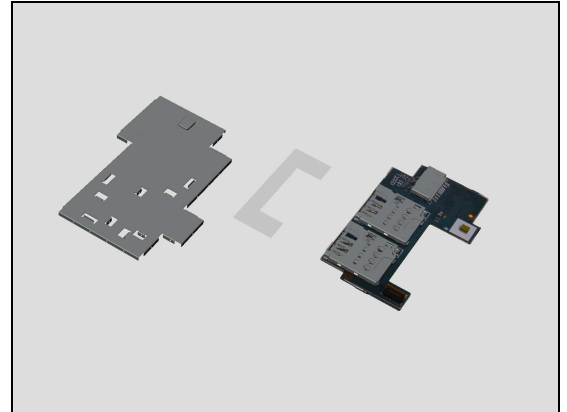
Follow the 5.3 – 5.4 Reassembly instructions!

REMOVAL

Remove the SIM Board Assy from Main PBA.

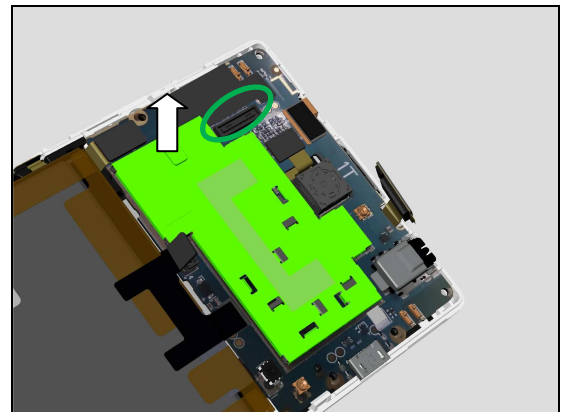
BtB connector is located at shown position in Picture.

If the SIM Board Assy is damaged or deformed after disassembly, then Scrap it, Not to be reused anymore!



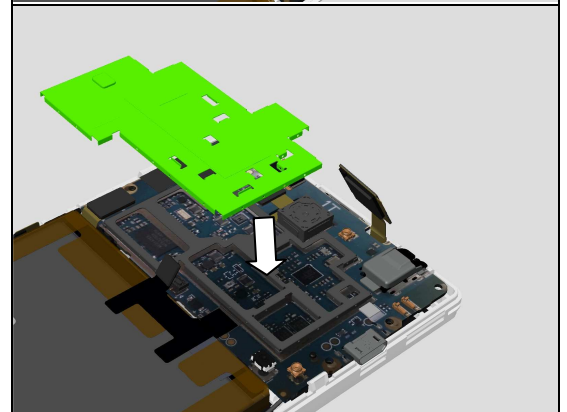
Remove the RF Shielding & SIM conductive adhesive from Main PBA.

Scrap, Not to be reused!



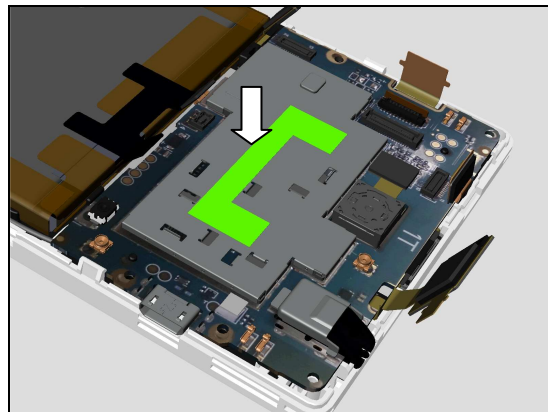
INSTALLATION

Place a new RF Shielding Cover on Main PBA.

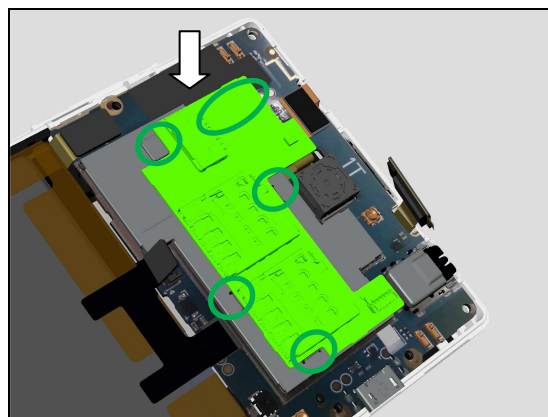


Replacement

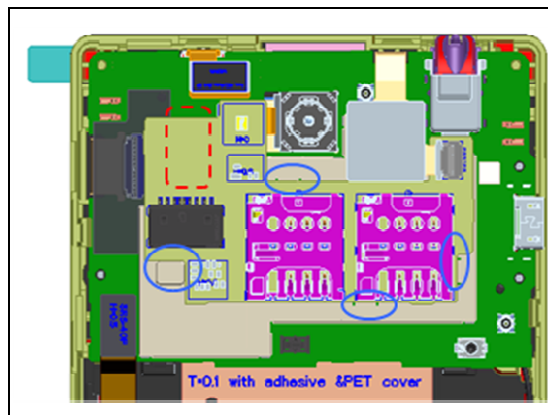
Place a new SIM conductive adhesive on RF Shielding Cover.



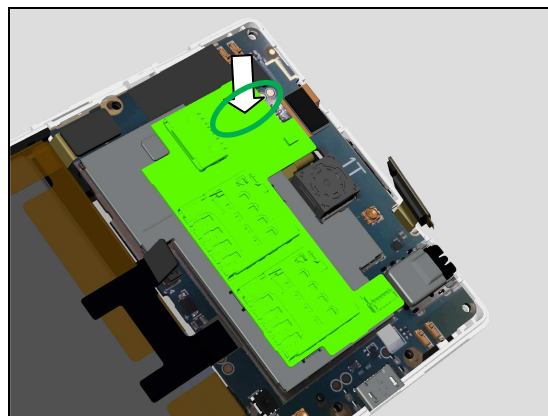
Place a new SIM Board Assy on Main PBA.



Assemble SIM PCB with 4 Alignments on Shielding Can.



Press BtB connector area on SIM Board Assy to secure it well assembled on Main PBA.



Replacement

4.22 Board Swap – Replacement

Follow the 3.1 – 3.4 Disassembly instructions!

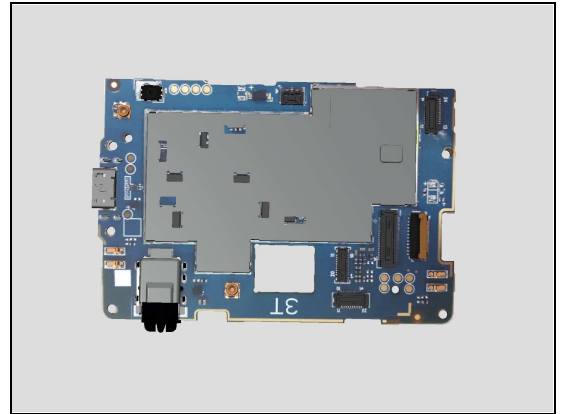
Follow the 4.16, 4.13, 4.19, 4.11, 4.18, 4.21 Removal instructions!

Replace the Swap Board.

Follow the 4.16, 4.13, 4.19, 4.11, 4.18, 4.21 Installation instructions!

Follow the 5.1 – 5.4 Reassembly instructions!

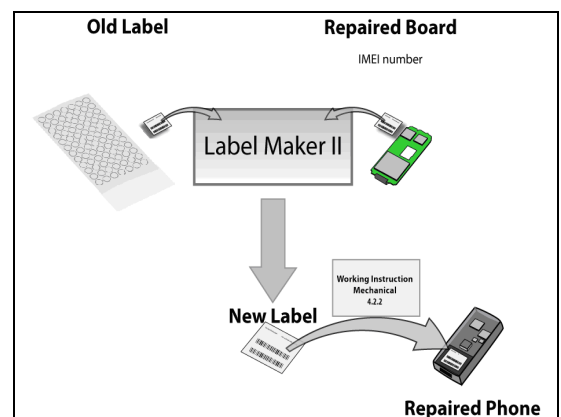
Note: Calibrate the Proximity sensor/Light sensor 1277-0611 Trouble Shooting Application – mechanical after replacement.



4.23 Board Swap – Change Label

CHANGE LABEL

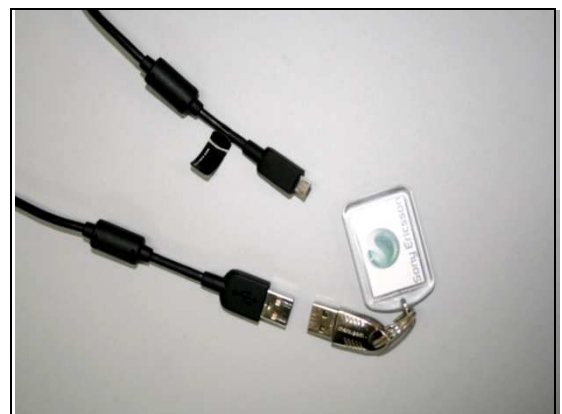
Follow the instructions in the Generic Repair Manual – Build swap for change of label.



4.24 Board Swap – Customize of Software

CUSTOMIZE OF SOFTWARE

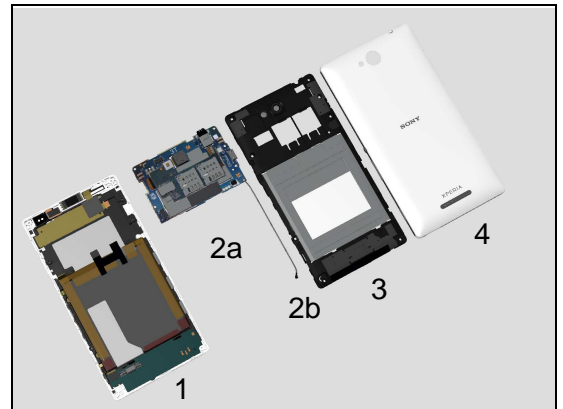
Follow the instructions in the Generic Repair Manual – Build swap for customization of the software.



5 Reassembly

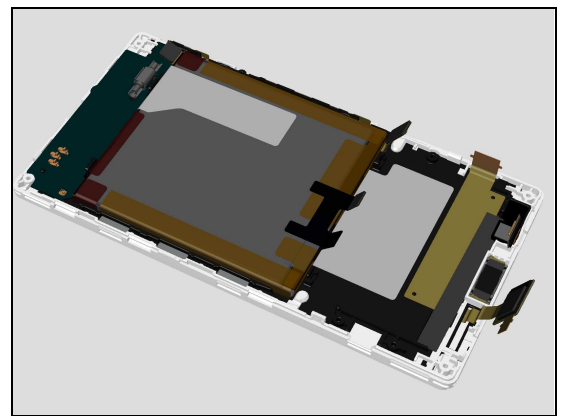
The reassembly is done in the following order:

1. Front Cover LCM TP Assy
2. Main PBA (a) & Coaxial Cable (b)
3. Rear Cover Assy
4. Battery Cover Assy



5.1 Front Cover LCM TP Assembly

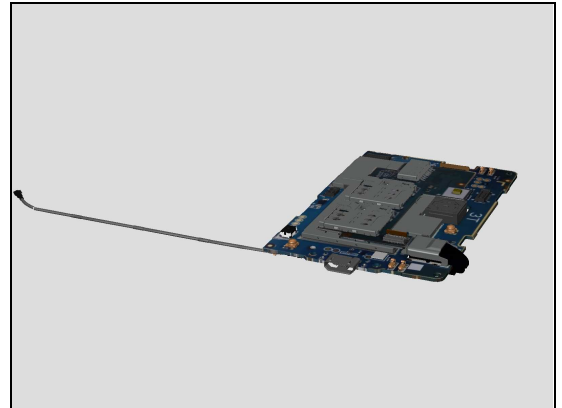
Prepare the Front Cover LCM TP Assy.



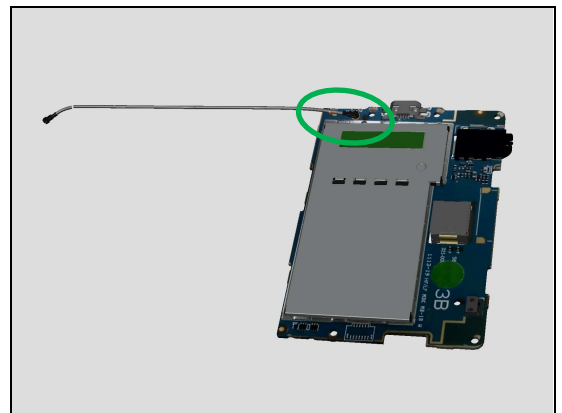
Reassembly

5.2 Main PBA (a) & Coaxial Cable (b)

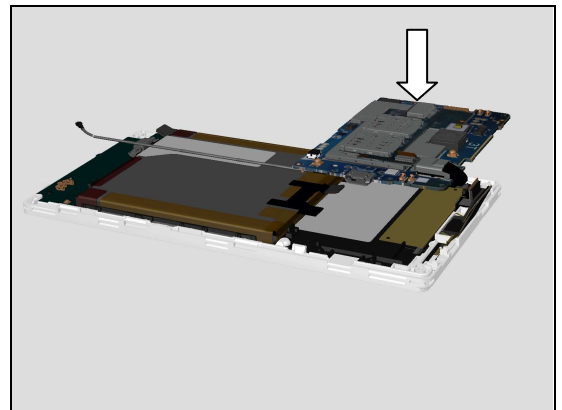
Prepare Main PBA and Coaxial cable.



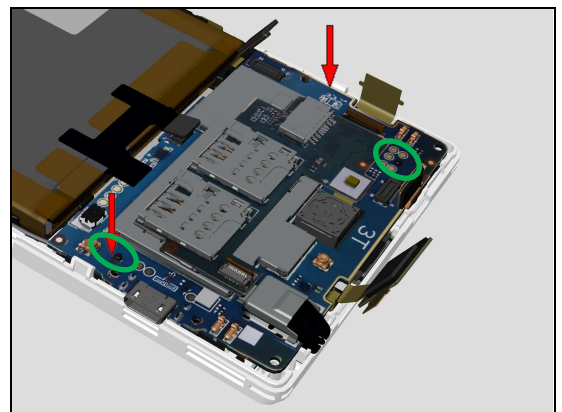
Check Coaxial Cable connector on Main PBA.



Put the Main PBA and Coaxial Cable on Front Cover TP LCM Assy.

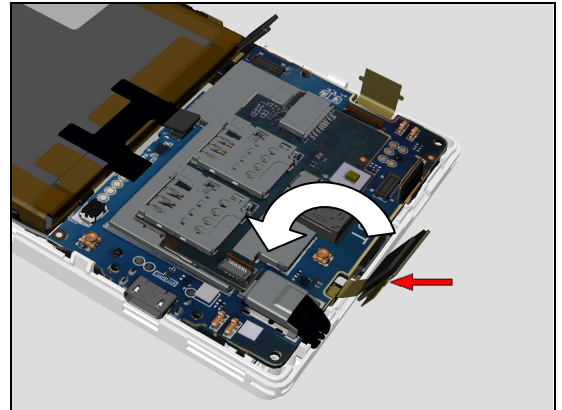


Press Main PBA to ensure two guide pins as shown well assembled.

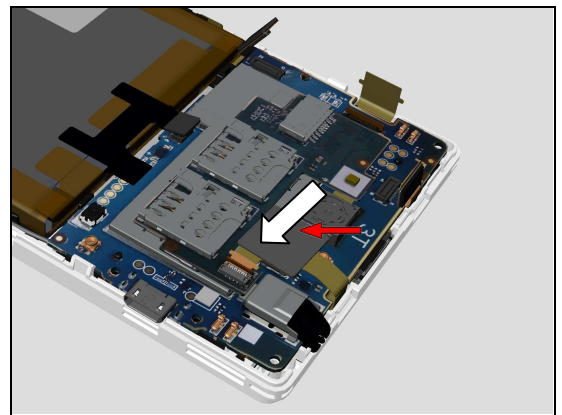


Reassembly

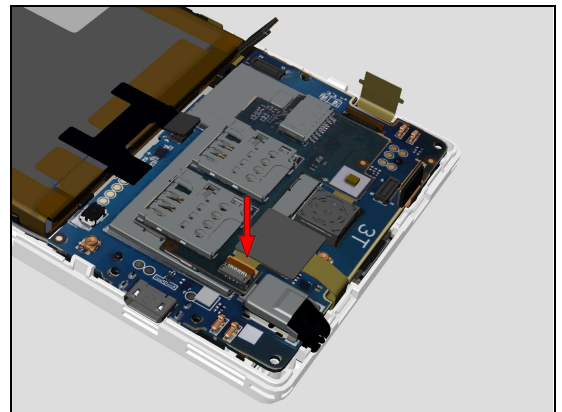
Turn around the Touch Panel FPC back on Main PBA.



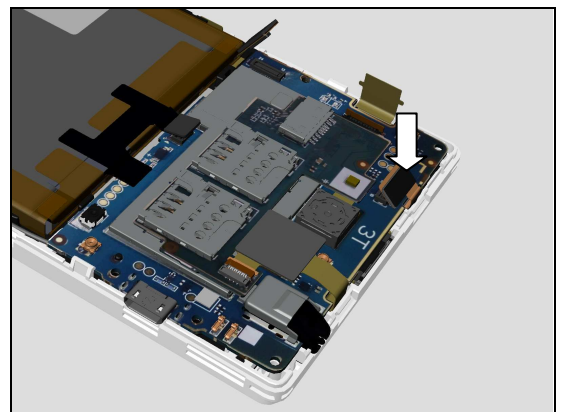
Insert Touch Panel FPC into its ZIF connector.



Close the Touch Panel FPC ZIF connector.

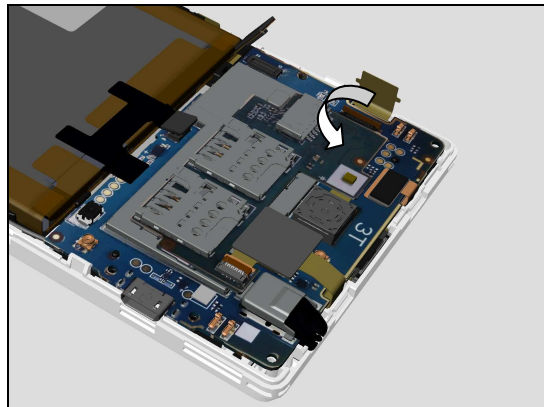


Assemble Front Camera BtB connector on Main PBA.

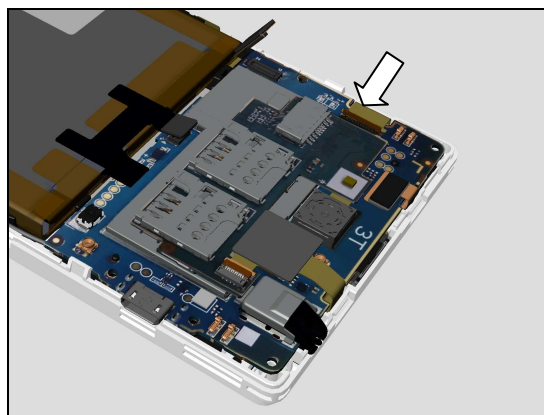


Reassembly

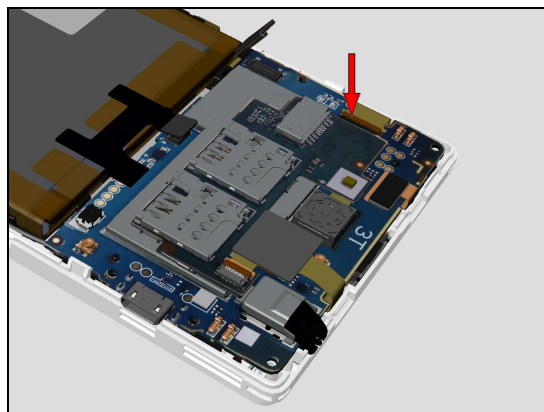
Turn around LCM FPC back on Main PBA.



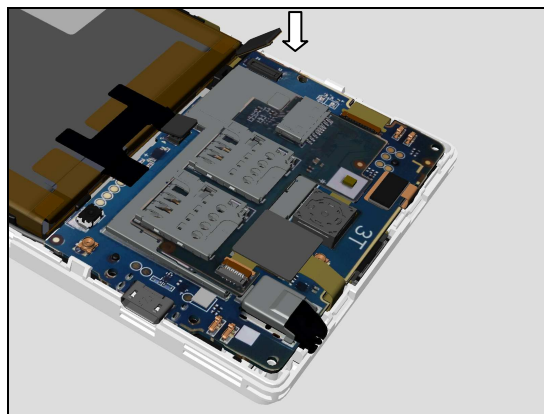
Insert LCM FPC into its ZIF connector.



Close the Touch Panel FPC ZIF connector.

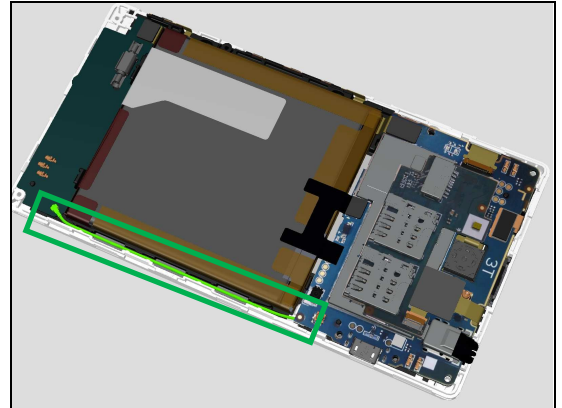


Assemble the Link FPC BtB connector on Main PBA.

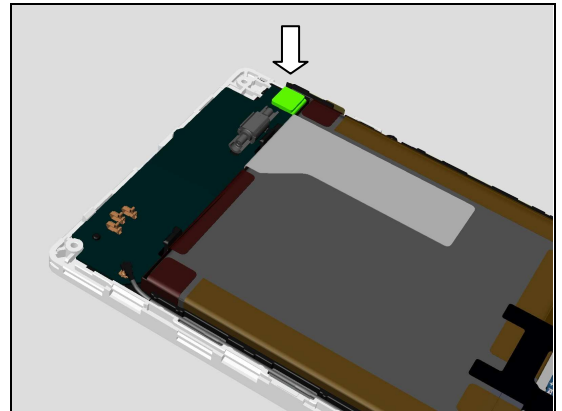


Reassembly

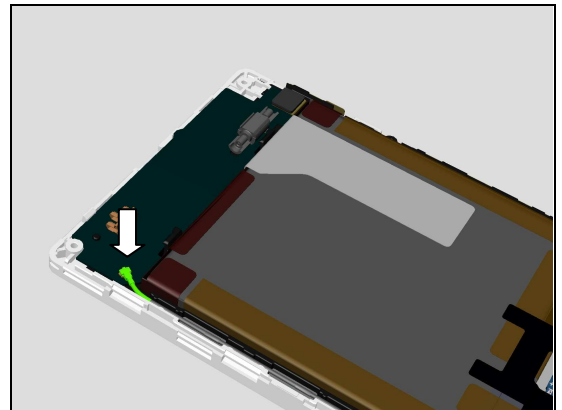
Insert the Coaxial Cable back into front housing cave.



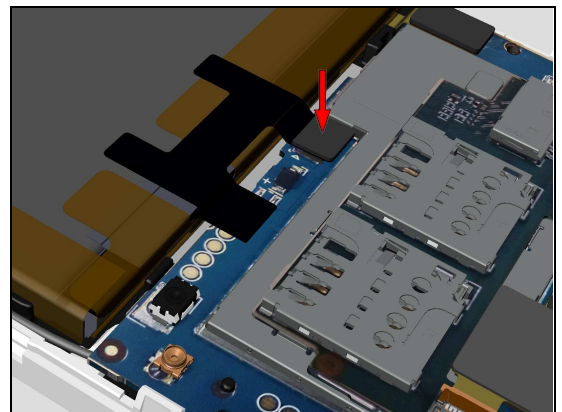
Assemble the Link FPC BtB connector onto SUB Board Assy.



Assemble the Coaxial Cable connector onto SUB Board Assy.



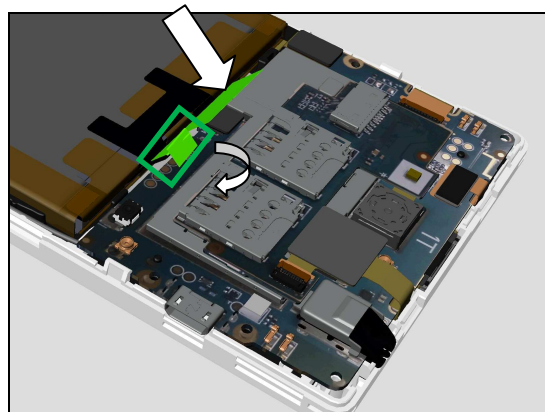
Assemble the Battery FPC Connector onto Main PBA.



Reassembly

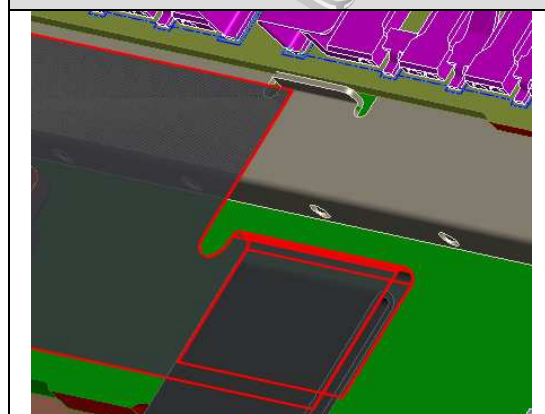
Assemble Battery FPC Mylar and fold shown area to cover Battery FPC.

Note: the Battery FPC Mylar is folded at shown area.



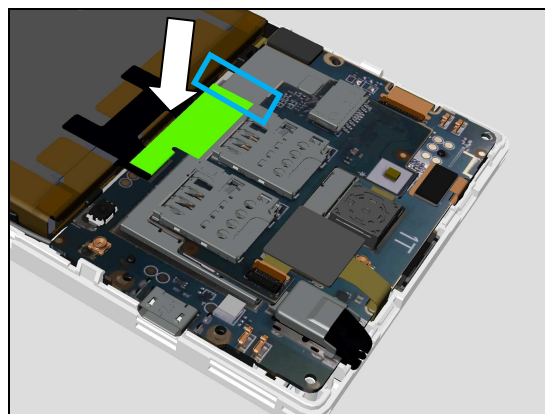
The Battery FPC Mylar need to be folded to the back of battery FPC.

Note: the Battery FPC Mylar is folded at shown area.

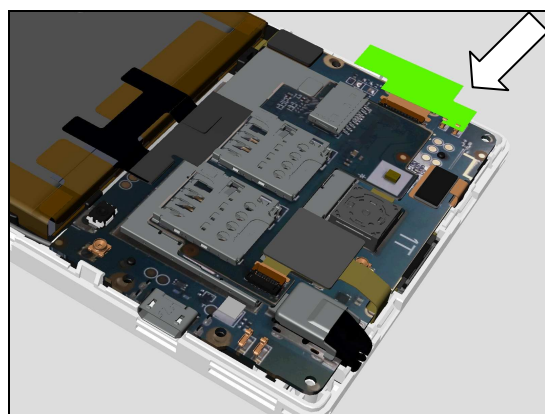


Align Battery FPC Mylar with the mark on shielding as shown.

Press Battery FPC Mylar on Main PBA to cover Battery Connector.

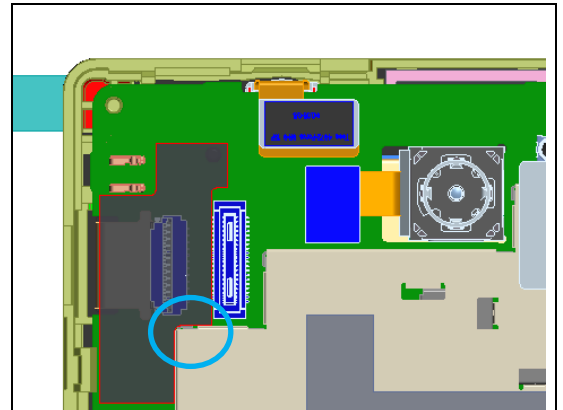


Insert LCM ZIF MYLAR under SIM PBA Assy.

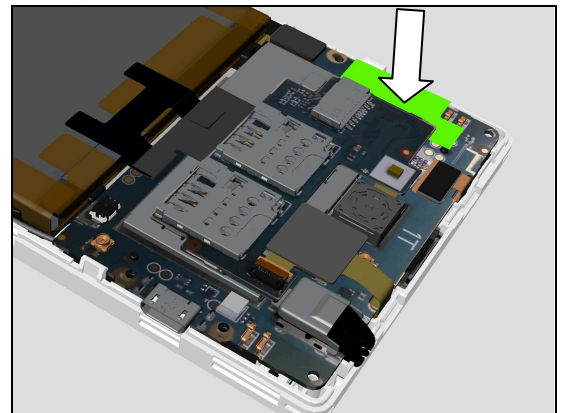


Reassembly

Align LCM ZIF MYLAR to the corner of shielding case

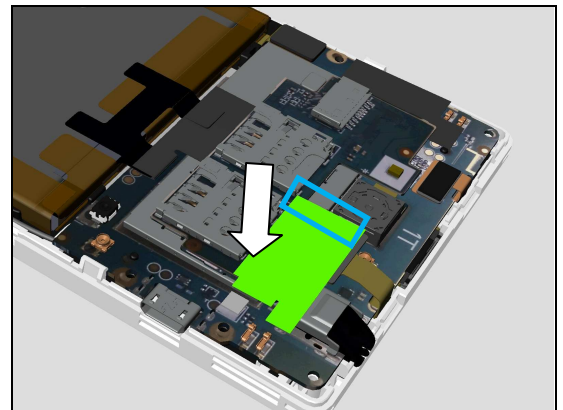


Press LCM ZIF MYLAR to cover LCM ZIF connector.



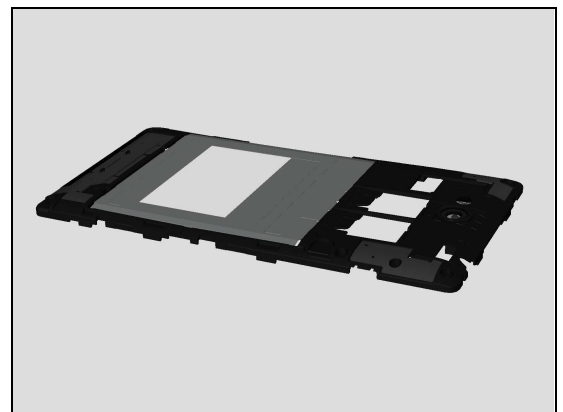
Assembly TP FPC MYLAR on Main PBA to cover TP Connector.

Align TP FPC MYLAR as shown in picture.



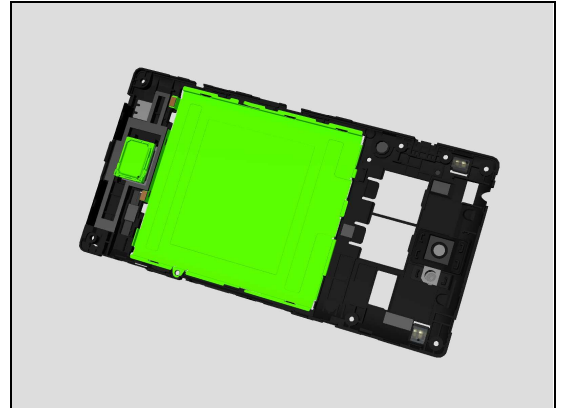
5.3 Rear Cover Assy

Prepare the Rear Cover Assy.

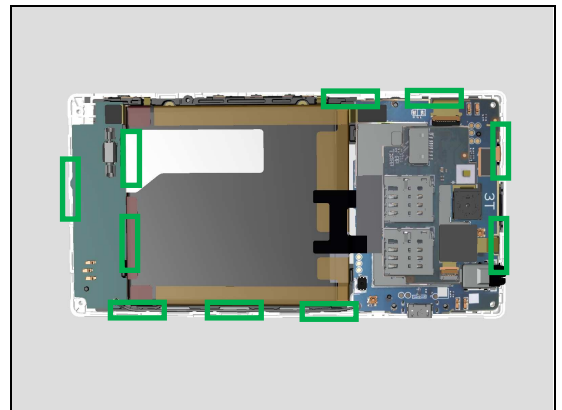


Reassembly

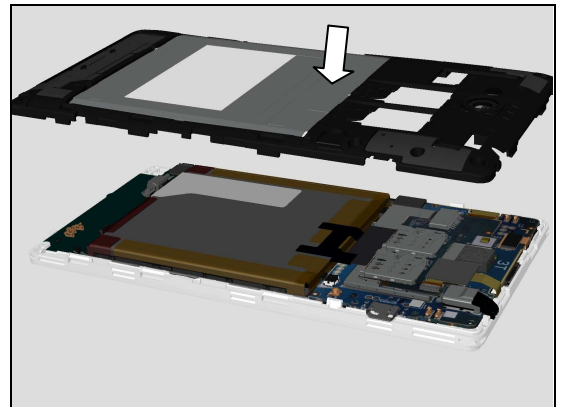
Check the speaker and Metal shielding are well in position on Rear Cover Assy.



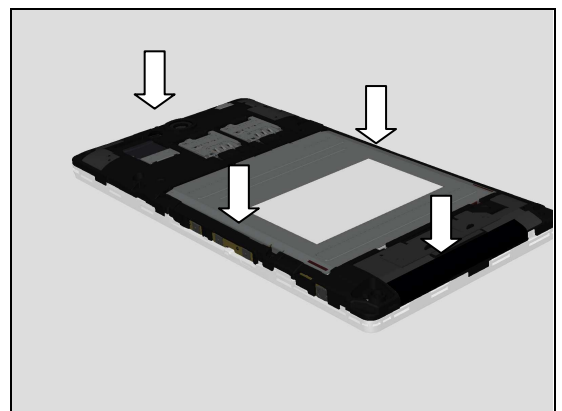
There are 10 hooks around Front Cover LCM TP Assy.



Assemble Rear Cover Assy on Core Unit.

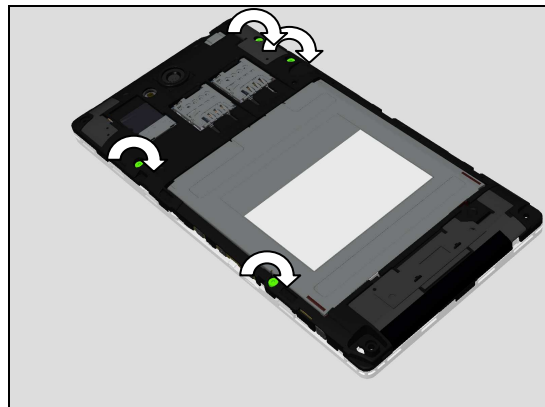


Press all four sides around Rear Cover Assy securing all hooks.

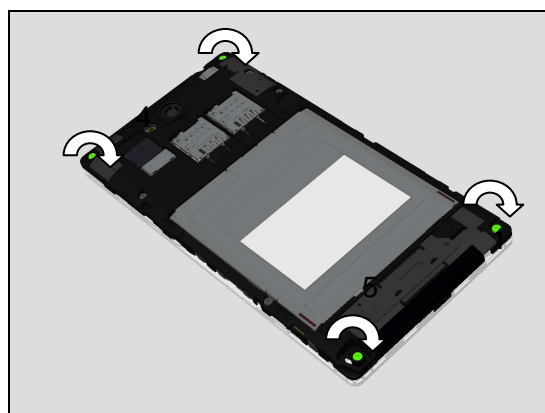


Reassembly

Apply 8.0 N.cm torque when tightening these four Screws with Bits (T5) in shown sequence.

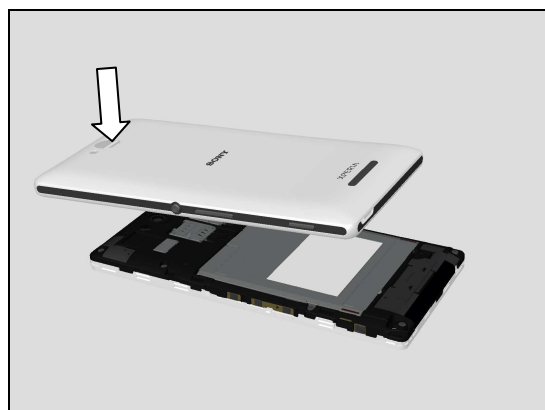


Apply 8.0 N.cm torque when tightening these four Screws with Bits (T5) in shown sequence.



5.4 Battery Cover Assy

Place the Battery Cover Assy from top side first.



Assemble top side of Battery Cover Assy first.

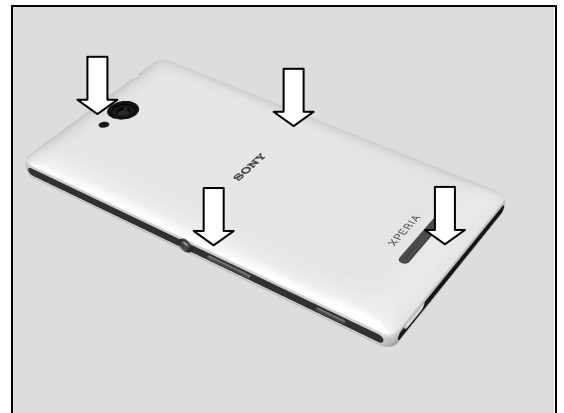


Reassembly

Press down on Bottom side of Battery Cover Assy.



Press all four sides to secure its position.



6 Country of Origin Barcodes for Brazil/VIVO Labels

Below is a link to a list of countries of origin. If you are printing a Brazil or VIVO label, scan the barcode corresponding to the correct country of origin for the “Fabricado” field.

7 Revision History

Rev.	Date	Changes / Comments
1	2013-07-15	Initial release
2	2013-07-22	Update Embedded battery adhesive drawing in chapter 4.8
3	2014-03-06	Update the cover page